

MOTOTRBO™ TWO-WAY RADIOS

DP3441

BASIC SERVICE MANUAL



Foreword

This manual covers all models of the DP series Portable Radios, unless otherwise specified. It includes all the information necessary to maintain peak product performance and maximum working time, using levels 1 and 2 maintenance procedures. This level of service goes down to the board replacement level and is typical of some local service centers, self-maintained customers, and distributors.

Product Safety and RF Exposure Compliance

| |
|--|
| <p>ATTENTION! Before using this radio, read the guide enclosed with your radio which contains important operating instructions for safe usage and RF energy awareness and control for compliance with applicable standards and regulations.</p> |
|--|

For a list of Motorola-approved antennas, batteries, and other accessories, visit the following web site: <http://www.motorolasolutions.com>

Computer Software Copyrights

The Motorola products described in this manual may include copyrighted Motorola computer programs stored in semiconductor memories or other media. Laws in the United States and other countries preserve for Motorola certain exclusive rights for copyrighted computer programs, including, but not limited to, the exclusive right to copy or reproduce in any form the copyrighted computer program. Accordingly, any copyrighted Motorola computer programs contained in the Motorola products described in this manual may not be copied, reproduced, modified, reverse-engineered, or distributed in any manner without the express written permission of Motorola. Furthermore, the purchase of Motorola products shall not be deemed to grant either directly or by implication, estoppel, or otherwise, any license under the copyrights, patents or patent applications of Motorola, except for the normal non-exclusive license to use that arises by operation of law in the sale of a product.

Document Copyrights

No duplication or distribution of this document or any portion thereof shall take place without the express written permission of Motorola. No part of this manual may be reproduced, distributed, or transmitted in any form or by any means, electronic or mechanical, for any purpose without the express written permission of Motorola.

Disclaimer

The information in this document is carefully examined, and is believed to be entirely reliable. However, no responsibility is assumed for inaccuracies. Furthermore, Motorola reserves the right to make changes to any products herein to improve readability, function, or design. Motorola does not assume any liability arising out of the applications or use of any product or circuit described herein; nor does it cover any license under its patent rights nor the rights of others.

Trademarks

MOTOROLA, MOTO, MOTOROLA SOLUTIONS and the Stylized M logo are trademarks or registered trademarks of Motorola Trademark Holdings, LLC and are used under license. All other trademarks are the property of their respective owners.

© 2013 Motorola Solutions, Inc.

All rights reserved.

Document History

The following major changes have been implemented in this manual since the previous edition:

| Edition | Description | Date |
|---------------|-----------------|----------|
| 68012009027-A | Initial Release | May 2013 |

Table of Contents

| | |
|---|-----------------|
| Foreword | ii |
| Product Safety and RF Exposure Compliance | ii |
| Computer Software Copyrights..... | ii |
| Document Copyrights | ii |
| Disclaimer | ii |
| Trademarks..... | ii |
| Document History | iii |
| Commercial Warranty | X |
| Limited Warranty..... | x |
| MOTOROLA COMMUNICATION PRODUCTS | x |
| I. What This Warranty Covers And For How Long | x |
| II. General Provisions | x |
| III. State Law Rights | x |
| IV. How To Get Warranty Service | xi |
| V. What This Warranty Does Not Cover..... | xi |
| VI. Patent And Software Provisions..... | xi |
| VII. Governing Law | xii |
| Battery and Charger Warranty | xiii |
| Workmanship Warranty | xiii |
| Capacity Warranty | xiii |
| Chapter 1 Introduction | 1-1 |
| 1.1 Notations Used in This Manual | 1-1 |
| 1.2 Radio Description..... | 1-1 |
| 1.2.1 DP3441 | 1-2 |
| 1.3 Summary of Bands Available | 1-3 |
| 1.4 Portable Radio Model Numbering Scheme..... | 1-4 |
| 1.5 Model Charts..... | 1-5 |
| 1.5.1 VHF Model Chart..... | 1-5 |
| 1.5.2 UHF Model Chart..... | 1-6 |
| 1.6 Specifications..... | 1-7 |
| 1.6.1 General..... | 1-7 |
| 1.6.2 Receiver..... | 1-8 |
| 1.6.3 Transmitter..... | 1-9 |
| 1.6.4 Self-quieter | 1-10 |
| 1.6.5 GPS | 1-11 |
| 1.6.6 Bluetooth..... | 1-11 |
| 1.6.7 MIL Standard | 1-12 |
| 1.6.8 Environmental Specification | 1-12 |

| | | |
|------------------|---|------------|
| Chapter 2 | Test Equipment and Service Aids | 2-1 |
| 2.1 | Recommended Test Equipment | 2-1 |
| 2.2 | Service Aids | 2-2 |
| 2.3 | Programming, Testing and Alignment Cable | 2-3 |
| Chapter 3 | Transceiver Performance Testing | 3-1 |
| 3.1 | General | 3-1 |
| 3.2 | Setup | 3-1 |
| 3.3 | Test Mode | 3-4 |
| 3.3.1 | Entering Test Mode | 3-4 |
| 3.3.2 | RF Test Mode | 3-4 |
| 3.3.3 | LED Test Mode | 3-8 |
| 3.3.4 | Speaker Tone Test Mode | 3-8 |
| 3.3.5 | Earpiece Tone Test Mode | 3-8 |
| 3.3.6 | Audio Loopback Earpiece Test Mode | 3-8 |
| 3.3.7 | Battery Check Test Mode | 3-8 |
| 3.3.8 | Button/Knob/PTT Test Mode | 3-9 |
| Chapter 4 | Radio Programming and Tuning | 4-1 |
| 4.1 | Introduction | 4-1 |
| 4.2 | Customer Programming Software Setup | 4-1 |
| 4.3 | AirTracer Application Tool | 4-2 |
| 4.4 | Radio Tuning Setup | 4-2 |
| 4.5 | RF Adaptor Assembly | 4-3 |
| Chapter 5 | Disassembly/Reassembly Procedures | 5-1 |
| 5.1 | Introduction | 5-1 |
| 5.2 | Preventive Maintenance | 5-1 |
| 5.2.1 | Inspection | 5-1 |
| 5.2.2 | Cleaning Procedures | 5-1 |
| 5.3 | Safe Handling of CMOS and LDMOS Devices | 5-2 |
| 5.4 | Repair Procedures and Techniques – General | 5-4 |
| 5.5 | Disassembling and Reassembling the Radio – General | 5-5 |
| 5.6 | Radio Disassembly – Detailed | 5-6 |
| 5.6.1 | Front Cover from Chassis Disassembly | 5-6 |
| 5.6.2 | Chassis Disassembly | 5-9 |
| 5.6.3 | Speaker, Microphone, and Universal Connector Flex Disassembly | 5-11 |
| 5.6.4 | Emergency Button Assembly Dissassembly | 5-12 |
| 5.7 | Radio Reassembly – Detailed | 5-13 |
| 5.7.1 | Emergency Button and Speaker Reassembly | 5-13 |
| 5.7.2 | Chassis Reassembly | 5-15 |
| 5.7.3 | Bluetooth Antenna Kit Disassembly/Reassembly | 5-17 |
| 5.7.3.1 | Bluetooth Antenna Kit Disassembly | 5-17 |
| 5.7.3.2 | Bluetooth Antenna Kit Reassembly | 5-18 |
| 5.8 | Ensuring Radio Immersibility | 5-19 |
| 5.8.1 | Servicing | 5-19 |
| 5.8.2 | Accidental Immersion | 5-19 |

| | | |
|---------|--|------|
| 5.8.3 | Specialized Test Equipment | 5-19 |
| 5.8.4 | Vacuum Pump Kit NLN9839 | 5-19 |
| 5.8.5 | Pressure Pump Kit NTN4265 | 5-20 |
| 5.8.6 | Miscellaneous Hardware | 5-20 |
| 5.8.7 | Vacuum Test..... | 5-20 |
| 5.8.8 | Pressure Test | 5-21 |
| 5.8.9 | Troubleshooting Leak Areas..... | 5-22 |
| 5.8.9.1 | Front Housing | 5-22 |
| 5.8.9.2 | Chassis (Main Seal O-ring)..... | 5-23 |
| 5.8.9.3 | Battery Contact Seal..... | 5-23 |
| 5.8.9.4 | Breathing Vent Membrane and Breathing Vent Label | 5-24 |
| 5.8.9.5 | Battery Maintenance | 5-24 |
| 5.8.10 | Troubleshooting Charts | 5-25 |
| 5.9 | Radio Exploded Mechanical Views and Parts Lists | 5-28 |
| 5.9.1 | DP3441 Model Exploded View and Parts List | 5-28 |
| 5.9.2 | Torque Chart..... | 5-31 |

Appendix A EMEA Regional Warranty, Service and Technical Support .. A-1

| | | |
|-------|--|-----|
| A.1 | Warranty and Service Support..... | A-1 |
| A.1.1 | Warranty Period and Return Instructions..... | A-1 |
| A.1.2 | After Warranty Period | A-1 |
| A.2 | European Radio Support Centre (ERSC) | A-2 |
| A.3 | Piece Parts..... | A-2 |
| A.4 | Technical Support | A-3 |
| A.5 | Further Assistance From Motorola..... | A-3 |

Appendix B Limited Level 3 Servicing B-1

| | | |
|-----|-------------------------------|-----|
| B.1 | Maintenance | B-1 |
| B.2 | Chip Components | B-1 |
| B.3 | Component and Parts list..... | B-2 |

Glossary Glossary-1

List of Figures

| | | |
|--------------|--|------|
| Figure 1-1. | DP3441 | 1-2 |
| Figure 1-2. | Portable Radio Model Numbering Scheme..... | 1-4 |
| Figure 2-1. | Programming, Testing and Alignment Cable..... | 2-3 |
| Figure 2-2. | Pin Layout of Side Connector | 2-4 |
| Figure 3-1. | DMR Radio Transmitter and Receiver Testing Setup | 3-2 |
| Figure 3-2. | RF Adaptor Plug | 3-3 |
| Figure 3-3. | Connect RF Adaptor Holder to radio RF input/output port..... | 3-3 |
| Figure 4-1. | CPS Programming Setup..... | 4-1 |
| Figure 4-2. | Radio Tuning Equipment Setup | 4-2 |
| Figure 4-3. | RF Plug Label and RF Adaptor Plug Removal..... | 4-3 |
| Figure 4-4. | RF Adaptor Holder Align | 4-3 |
| Figure 4-5. | RF Adaptor Fasten and Slot | 4-4 |
| Figure 4-6. | RF Adaptor in Place..... | 4-4 |
| Figure 5-1. | Antenna and Battery removal. | 5-6 |
| Figure 5-2. | Channel Selector and Volume Knob removal. | 5-7 |
| Figure 5-3. | Chassis Screw removal..... | 5-7 |
| Figure 5-4. | Chassis removal | 5-8 |
| Figure 5-5. | Disconnecting the chassis | 5-8 |
| Figure 5-6. | Main Board and GOB Retainer removal | 5-9 |
| Figure 5-7. | O-ring removal | 5-10 |
| Figure 5-8. | Speaker Removal..... | 5-11 |
| Figure 5-9. | Emergency Button Disassembly | 5-12 |
| Figure 5-10. | Emergency Button Reassembly..... | 5-13 |
| Figure 5-11. | Speaker Removal..... | 5-14 |
| Figure 5-12. | O-ring Reassembly..... | 5-15 |
| Figure 5-13. | Chassis Reassembly..... | 5-16 |
| Figure 5-14. | Bluetooth Removal..... | 5-17 |
| Figure 5-15. | Bluetooth Reassembly | 5-18 |
| Figure 5-16. | Connector Fitting – Fitting Seal Pump Connector..... | 5-19 |
| Figure 5-17. | Troubleshooting Flow Chart for Vacuum Test (Sheet 1 of 2)..... | 5-25 |
| Figure 5-18. | Troubleshooting Flow Chart for Vacuum Test (Sheet 2 of 2)..... | 5-26 |
| Figure 5-19. | Troubleshooting Flow Chart for Pressure Test & Leakage Areas | 5-27 |
| Figure 5-20. | DP3441 Exploded View | 5-28 |
| Figure B-1. | PCB Top View | B-2 |
| Figure B-2. | PCB Bottom View..... | B-2 |

List of Tables

| | | |
|------------|---|------|
| Table 2-1. | Recommended Test Equipment | 2-1 |
| Table 2-2. | Service Aids | 2-2 |
| Table 2-3. | Pin Configuration of Side Connector | 2-4 |
| Table 3-1. | Initial Equipment Control Settings | 3-2 |
| Table 3-2. | Test Environments | 3-4 |
| Table 3-3. | Test Frequencies | 3-5 |
| Table 3-4. | Transmitter Performance Checks | 3-6 |
| Table 3-5. | Receiver Performance Checks | 3-7 |
| Table 4-1. | Software Installation Kits Radio Tuning Setup | 4-1 |
| Table 5-1. | Lead Free Solder Wire Part Number List | 5-4 |
| Table 5-2. | Lead Free Solder Paste Part Number List | 5-4 |
| Table 5-3. | DP3441 Exploded View Parts List | 5-29 |
| Table 5-4. | Additional Part List Information | 5-30 |
| Table 5-5. | Torque Specifications for Screws | 5-31 |

Related Publications

| | |
|---|-------------|
| Product Safety and RF Exposure | 6864117B25 |
| MOTOTRBO™ DP3441 Non-Display Portable User Guide | 68012009018 |
| MOTOTRBO™ DP3441 Non-Display Portable Quick Reference Guide | 68012009019 |

Commercial Warranty

Limited Warranty

MOTOROLA COMMUNICATION PRODUCTS

I. What This Warranty Covers And For How Long

MOTOROLA INC. ("MOTOROLA") warrants the MOTOROLA manufactured Communication Products listed below ("Product") against defects in material and workmanship under normal use and service for a period of time from the date of purchase as scheduled below: Motorola, at its option, will at no charge either repair the Product (with new or reconditioned parts), replace it (with a new or reconditioned Product), or refund the purchase price of the Product during the warranty period provided it is returned in accordance with the terms of this warranty. Replaced parts or boards are warranted for the balance of the original applicable warranty period. All replaced parts of Product shall become the property of MOTOROLA.

This express limited warranty is extended by MOTOROLA to the original end user purchaser only and is not assignable or transferable to any other party. This is the complete warranty for the Product manufactured by MOTOROLA. MOTOROLA assumes no obligations or liability for additions or modifications to this warranty unless made in writing and signed by an officer of MOTOROLA. Unless made in a separate agreement between MOTOROLA and the original end user purchaser, MOTOROLA does not warrant the installation, maintenance or service of the Product.

MOTOROLA cannot be responsible in any way for any ancillary equipment not furnished by MOTOROLA which is attached to or used in connection with the Product, or for operation of the Product with any ancillary equipment, and all such equipment is expressly excluded from this warranty. Because each system which may use the Product is unique, MOTOROLA disclaims liability for range, coverage, or operation of the system as a whole under this warranty.

II. General Provisions

This warranty sets forth the full extent of MOTOROLA'S responsibilities regarding the Product. Repair, replacement or refund of the purchase price, at MOTOROLA's option, is the exclusive remedy. THIS WARRANTY IS GIVEN IN LIEU OF ALL OTHER EXPRESS WARRANTIES. IMPLIED WARRANTIES, INCLUDING WITHOUT LIMITATION, IMPLIED WARRANTIES OF MERCHANTABILITY AND FITNESS FOR A PARTICULAR PURPOSE, ARE LIMITED TO THE DURATION OF THIS LIMITED WARRANTY. IN NO EVENT SHALL MOTOROLA BE LIABLE FOR DAMAGES IN EXCESS OF THE PURCHASE PRICE OF THE PRODUCT, FOR ANY LOSS OF USE, LOSS OF TIME, INCONVENIENCE, COMMERCIAL LOSS, LOST PROFITS OR SAVINGS OR OTHER INCIDENTAL, SPECIAL OR CONSEQUENTIAL DAMAGES ARISING OUT OF THE USE OR INABILITY TO USE SUCH PRODUCT, TO THE FULL EXTENT SUCH MAY BE DISCLAIMED BY LAW.

III. State Law Rights

SOME STATES DO NOT ALLOW THE EXCLUSION OR LIMITATION OF INCIDENTAL OR CONSEQUENTIAL DAMAGES OR LIMITATION ON HOW LONG AN IMPLIED WARRANTY LASTS, SO THE ABOVE LIMITATION OR EXCLUSIONS MAY NOT APPLY.

This warranty gives specific legal rights, and there may be other rights which may vary from state to state.

IV. How To Get Warranty Service

You must provide proof of purchase (bearing the date of purchase and Product item serial number) in order to receive warranty service and, also, deliver or send the Product item, transportation and insurance prepaid, to an authorized warranty service location. Warranty service will be provided by Motorola through one of its authorized warranty service locations. If you first contact the company which sold you the Product, it can facilitate your obtaining warranty service. You can also

V. What This Warranty Does Not Cover

- A. Defects or damage resulting from use of the Product in other than its normal and customary manner.
- B. Defects or damage from misuse, accident, water, or neglect.
- C. Defects or damage from improper testing, operation, maintenance, installation, alteration, modification, or adjustment.
- D. Breakage or damage to antennas unless caused directly by defects in material workmanship.
- E. A Product subjected to unauthorized Product modifications, disassemblies or repairs (including, without limitation, the addition to the Product of non-Motorola supplied equipment) which adversely affect performance of the Product or interfere with Motorola's normal warranty inspection and testing of the Product to verify any warranty claim.
- F. Product which has had the serial number removed or made illegible.
- G. Rechargeable batteries if:
 - any of the seals on the battery enclosure of cells are broken or show evidence of tampering.
 - the damage or defect is caused by charging or using the battery in equipment or service other than the Product for which it is specified.
- H. Freight costs to the repair depot.
- I. A Product which, due to illegal or unauthorized alteration of the software/firmware in the Product, does not function in accordance with MOTOROLA's published specifications or the FCC type acceptance labeling in effect for the Product at the time the Product was initially distributed from MOTOROLA.
- J. Scratches or other cosmetic damage to Product surfaces that does not affect the operation of the Product.
- K. Normal and customary wear and tear.

VI. Patent And Software Provisions

MOTOROLA will defend, at its own expense, any suit brought against the end user purchaser to the extent that it is based on a claim that the Product or parts infringe a United States patent, and MOTOROLA will pay those costs and damages finally awarded against the end user purchaser in any such suit which are attributable to any such claim, but such defense and payments are conditioned on the following:

- A. that MOTOROLA will be notified promptly in writing by such purchaser of any notice of such claim;
- B. that MOTOROLA will have sole control of the defense of such suit and all negotiations for its settlement or compromise; and

- C. should the Product or parts become, or in MOTOROLA's opinion be likely to become, the subject of a claim of infringement of a United States patent, that such purchaser will permit MOTOROLA, at its option and expense, either to procure for such purchaser the right to continue using the Product or parts or to replace or modify the same so that it becomes noninfringing or to grant such purchaser a credit for the Product or parts as depreciated and accept its return. The depreciation will be an equal amount per year over the lifetime of the Product or parts as established by MOTOROLA.

MOTOROLA will have no liability with respect to any claim of patent infringement which is based upon the combination of the Product or parts furnished hereunder with software, apparatus or devices not furnished by MOTOROLA, nor will MOTOROLA have any liability for the use of ancillary equipment or software not furnished by MOTOROLA which is attached to or used in connection with the Product. The foregoing states the entire liability of MOTOROLA with respect to infringement of patents by the Product or any parts thereof.

Laws in the United States and other countries preserve for MOTOROLA certain exclusive rights for copyrighted MOTOROLA software such as the exclusive rights to reproduce in copies and distribute copies of such Motorola software. MOTOROLA software may be used in only the Product in which the software was originally embodied and such software in such Product may not be replaced, copied, distributed, modified in any way, or used to produce any derivative thereof. No other use including, without limitation, alteration, modification, reproduction, distribution, or reverse engineering of such MOTOROLA software or exercise of rights in such MOTOROLA software is permitted. No license is granted by implication, estoppel or otherwise under MOTOROLA patent rights or copyrights.

VII. Governing Law

This Warranty is governed by the laws of the State of Illinois, USA.

Battery and Charger Warranty

Workmanship Warranty

The workmanship warranty guarantees against defects in workmanship under normal use and service.

| | |
|---|---------------|
| All MOTOTRBO Batteries | Two (2) Years |
| IMPRES Chargers (Single-Unit and Multi-Unit, Non-Display) | Two (2) Years |
| IMPRES Chargers (Multi-Unit with Display) | One (1) Year |
| Core Chargers (Single-Unit and Multi-Unit, Non-Display) | Two (2) Years |

Capacity Warranty

The capacity warranty guarantees 80% of the rated capacity for the warranty duration.

| | |
|---|-----------|
| Nickel Metal-Hydride (NiMH) or Lithium-Ion (Li-Ion) Batteries | 12 Months |
| IMPRES Batteries, When Used Exclusively with IMPRES Chargers | 18 Months |

Notes

Chapter 1 Introduction

1.1 Notations Used in This Manual

Throughout the text in this publication, you will notice the use of note and caution notations. These notations are used to emphasize that safety hazards exist, and due care must be taken and observed.

NOTE An operational procedure, practice, or condition that is essential to emphasize.



Caution

CAUTION indicates a potentially hazardous situation which, if not avoided, might result in equipment damage.



WARNING

Do NOT use any form of connector, e.g. wires, crocodile clips, and probes, to supply voltage to the radio, other than the Motorola approved battery eliminator.

1.2 Radio Description

The DP series portable radios are available in various frequency ranges and power levels. [See “Summary of Bands Available” on page 1-3](#) for Radio Frequency Ranges and Power Levels.

These digital radios are among the most sophisticated two-way radios available. They have a robust design for radio users who need high performance, quality, and reliability in their daily communications. This architecture provides the capability of supporting a multitude of legacy and advanced features resulting in a more cost-effective two-way radio communications solution.

1.2.1 DP3441

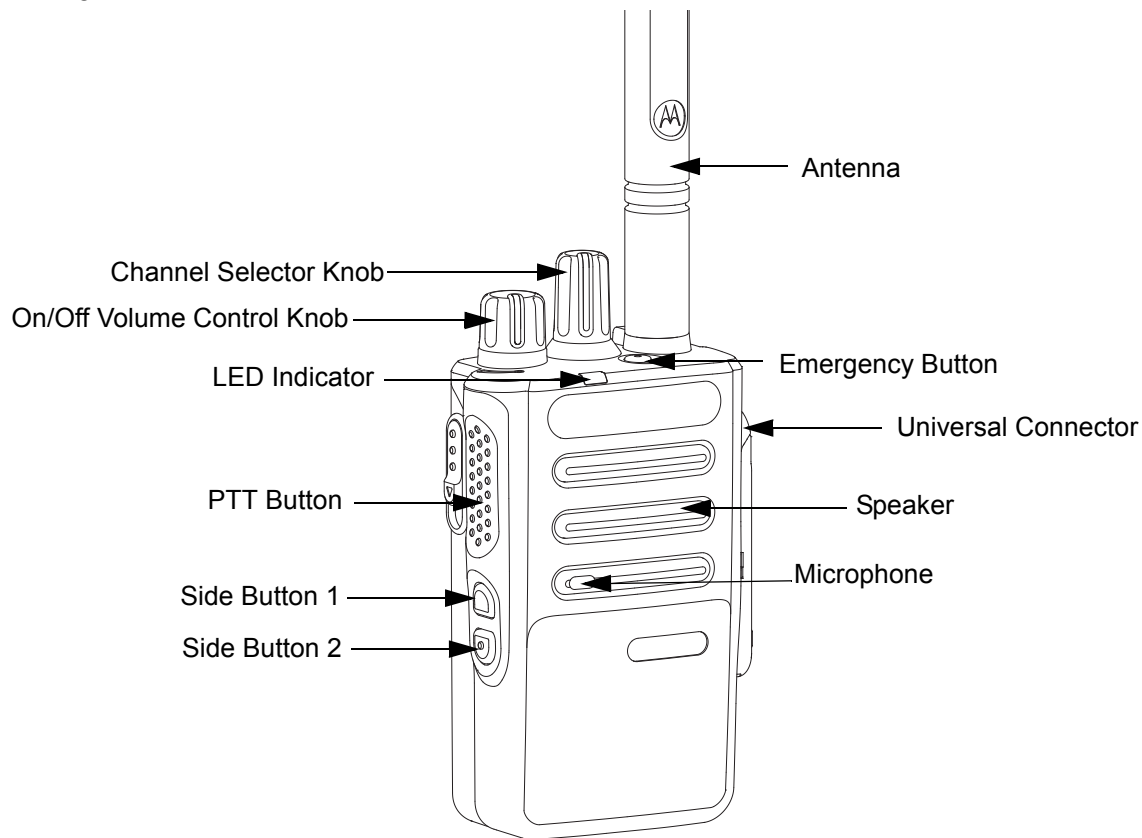


Figure 1-1. DP3441

- **ON/OFF/VOLUME KNOB** – Rotate clockwise until click is heard to turn on radio; rotate counter-clockwise until click is heard to turn off radio. Rotate clockwise to increase volume level; rotate counter-clockwise to decrease volume level.
- **LED INDICATORS** – Red, green and orange light-emitting diodes indicate operating status.
- **SIDE BUTTONS** – These two buttons are field programmable using CPS.
- **CHANNEL SELECTOR KNOB** – Rotate clockwise to increment and counter clockwise to decrement the channel.
- **PUSH-TO-TALK (PTT)** – Press to execute voice operations (e.g. Group call and Private Call).
- **ANTENNA** – Provides the needed RF amplification when transmitting or receiving.
- **MICROPHONE** – Allows the voice to be sent when PTT or voice operations are activated.
- **UNIVERSAL CONNECTOR FOR ACCESSORIES** – Interface point for all accessories to be used with the radio. It has eight points to which specific accessories will connect and be activated.
- **EMERGENCY BUTTON** – Turns on and off Emergency Operations.
- **SPEAKER** – Outputs all tones and audio generated by the radio (e.g. features like keypad tones and voice audio).

1.3 Summary of Bands Available

Table below lists all the bands available in this manual. For details, please refer to the Model Charts section.

| Frequency Band | Bandwidth | Power Level |
|----------------|-------------|-------------|
| VHF | 136–174 MHz | 1W–5W |
| UHF | 403–527 MHz | 1W–4W |

1.4 Portable Radio Model Numbering Scheme

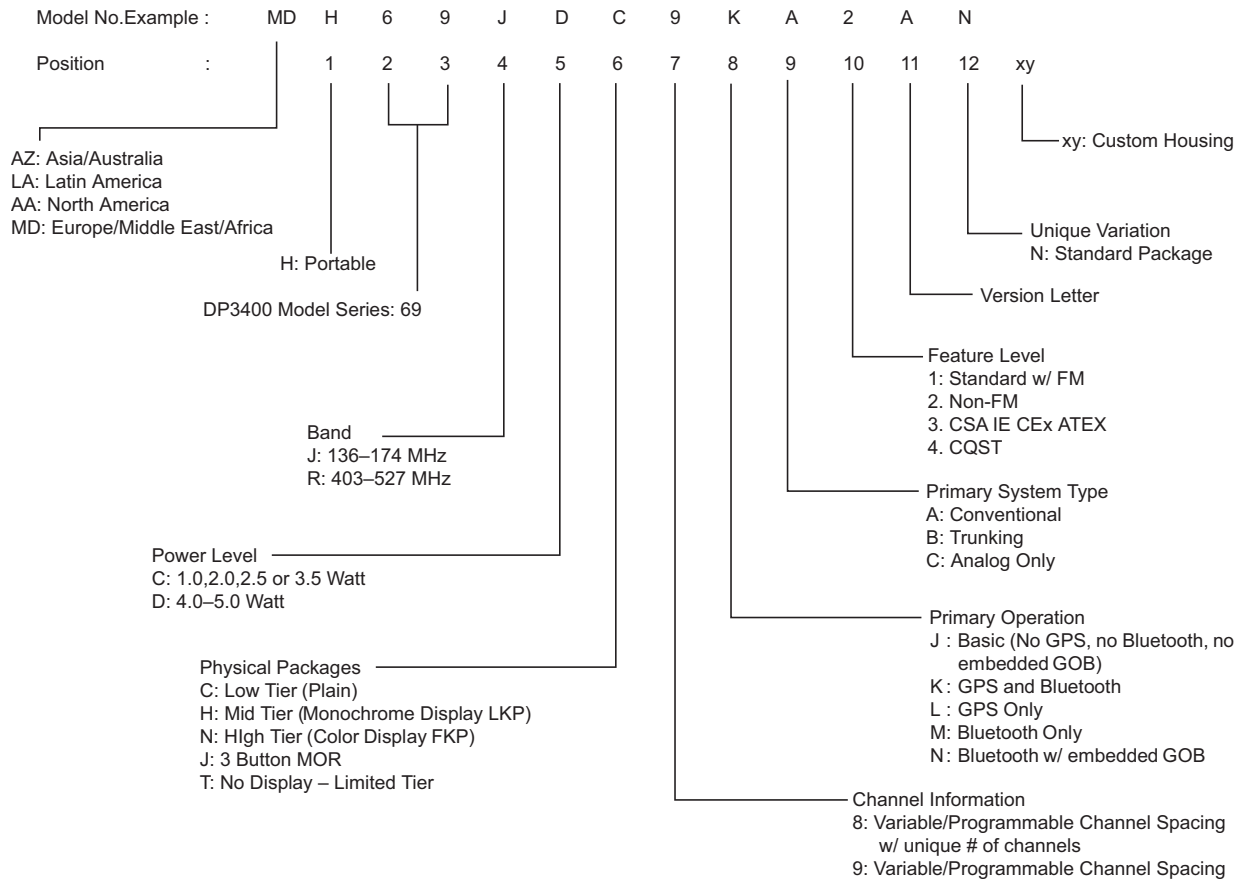


Figure 1-2. Portable Radio Model Numbering Scheme

1.5 Model Charts

1.5.1 VHF Model Chart

| DP Series, VHF, 136–174 MHz, 5W | | |
|--|-------------|---|
| Model | | Description |
| MDH69JDC9KA2AN | | 136–174 MHz , 5W, DP3441 Non Keypad Portable with GPS and BT |
| | Item | Description |
| X | PMLD4607_S | BC Kit, 136–174 MHz, 5W, MOTOTRBO Non Keypad Portable with GPS and BT |
| X | PMLN6484_ | Front Cover Kit, Non Keypad Portable with Bluetooth |
| X | PMAD4119_ | VHF Stubby Antenna 136–155 MHz |
| X | PMAD4120_ | VHF Stubby Antenna 140–165 MHz |
| X | PMAD4121_ | VHF Stubby Antenna 160–174 MHz |

NOTE:

X = Item Included

_ = the latest version kit. When ordering a kit, refer to your specific kit for the suffix number.

1.5.2 UHF Model Chart

| DP Series, UHF, 403–527 MHz, 4W | | |
|--|---|--|
| Model | Description | |
| MDH69RDC9KA2AN | 403–527 MHz, 4W, DP3441 Non Keypad Portable with GPS and BT | |
| | Item | Description |
| X | PMLE4936_S | BC Kit, 403–527 MHz, 4W, MOTOTRBO Non Keypad Portable with GPS |
| X | PMLN6484_ | Front Cover Kit, Non Keypad Portable with Bluetooth |
| X | PMAE4069_ | UHF Stubby Antenna 403–460 MHz |
| X | PMAE4070_ | UHF Stubby Antenna 440–490 MHz |
| X | PMAE4071_ | UHF Stubby Antenna 470–527 MHz |

1.6 Specifications

1.6.1 General

| General | Non Keypad DP3441 |
|--|--|
| Channel Capacity | 32 |
| Frequency | VHF: 136 – 174 MHz UHF: 403 – 527 MHz |
| Dimensions (HxWxT) w/ NiMH battery | 99.8 x 56.0 x 29.7 mm |
| Weight (with Lilon non-FM battery) | 248g |
| Power Supply | 7.5 V nominal |
| FCC Description | UHF: AZ489FT4914 VHF: AZ489FT3833 |
| IC Description | UHF: 109U-89FT4914 VHF: 109U-89FT3833 |
| Average battery life at 5/5/90 duty cycle with battery saver enabled in carrier squelch and transmitter in high power. | |
| Core Slim Li-Ion (1600 mAH) battery | Analog: 8.5 hrs Digital: 12.3 hrs |

NOTE Weight can have 5% margin of error

1.6.2 Receiver

| Receiver | Non Keypad DP3441 |
|---|--|
| Frequencies | VHF: 136 – 174 MHz UHF: 403 – 527 MHz |
| Channel Spacing | 12.5 kHz/ 20 kHz/ 25 kHz |
| Frequency Stability (-30°C to +60°C) | +/-0.5 ppm |
| Analog Sensitivity (12 dB SINAD) | 0.3 μ V (0.22 uV typical) |
| Digital Sensitivity (5% BER) | 0.25 μ V 0.19 μ V (typical) |
| Intermodulation (TIA603C) | 70 dB |
| Adjacent Channel Selectivity TIA603 TIA603C | 60 dB @ 12.5 kHz, 70 dB @ 20/25 kHz 45 dB @ 12.5 kHz, 70 dB @ 20/25 kHz |
| Spurious Rejection (TIA603C) | 70 dB |
| Rated Audio | 0.5 W |
| Audio Distortion @ Rated Audio | 5%(3% typical) |
| Hum and Noise | -40 dB @ 12.5 kHz -45 dB @ 20/25 kHz |
| Audio Response | TIA603D |
| Conducted Spurious Emission (TIA603C) | -57 dBm |

1.6.3 Transmitter

| Transmitter | Non Keypad DP3441 |
|--------------------------------------|--|
| Frequencies | VHF: 136 – 174 MHz UHF: 403 – 527 MHz |
| Channel Spacing | 12.5 kHz/ 20 kHz/ 25 kHz |
| Frequency Stability (-30°C to +60°C) | +/-0.5 ppm |
| Power Output (Low Power) | 1 W |
| Power Output (High Power) | VHF: 5 W UHF: 4 W |
| Modulation Limiting | +/-2.5 kHz @ 12.5 kHz +/-4.0kHz @ 20 kHz +/-5.0 kHz @ 25 kHz |
| FM Hum and Noise | -40 dB @ 12.5 kHz -45 dB @ 20/25 kHz |
| Conducted / Radiated Emission | -36 dBm < 1 GHz -30 dBm > 1 GHz |
| Adjacent Channel Power | 60 dB @ 12.5 kHz 70 dB @ 20/25 kHz |
| Audio Response | TIA603D |
| Audio Distortion | 3% |
| FM Modulation | 12.5 kHz: 11K0F3E 25 kHz: 16K0F3E |
| 4FSK Digital Modulation | 12.5 kHz Data Only: 7K60F1D and 7K60FXD 12.5 kHz Data & Voice: 7K60F1E and 7K60FXE Combination of 12.5 kHz Voice and Data: 7K60F1W |
| Digital Vocoder Type | AMBE+2™ |
| Digital Protocol | ETSI-TS102361-1 ETSI-TS102361-2 ETSI-TS102361-3 |

Conforms to:

ETSI TS 102 361 (Parts 1, 2 & 3) – ETSI DMR Standard
 ETSI EN 300 086 – ETSI RF Specifications (Analog)
 ETSI EN 300 113 – ETSI RF Specifications (Digital)
 1999/5/EC (R&TTE – Radio and Telecommunications Terminal Equipment)
 2011/65/EU (RoHS 2 – Banned Substances)
 2012/19/EU (WEEE – Waste Electrical and Electronic Equipment)
 94/62/EC (Packaging and Packaging Waste)
 Radio meets applicable regulatory requirements.

1.6.4 Self-quieter

| VHF Self-Quieter Frequencies |
|------------------------------|
| 139.2 +/- 10 kHz |
| 139.52 +/- 10 kHz |
| 140.545 +/- 10 kHz |
| 143.615 +/- 10 kHz |
| 143.84 +/- 10 kHz |
| 144.34 +/- 10 kHz |
| 144.385 +/- 10 kHz |
| 148.48 +/- 10 kHz |
| 148.8 +/- 10 kHz |
| 152.575 +/- 10 kHz |
| 153.6 +/- 10 kHz |
| 154.625 +/- 10 kHz |
| 158.4 +/- 10 kHz |
| 158.72 +/- 10 kHz |
| 163.2 +/- 10 kHz |
| 167.68 +/- 10 kHz |
| 168 +/- 10 kHz |
| 172.8 +/- 10 kHz |

| UHF Self-Quieter Frequencies |
|------------------------------|
| 403.2 +/- 10 kHz |
| 412.8 +/- 10 kHz |
| 422.4 +/- 10 kHz |
| 441.6 +/- 10 kHz |
| 460.8 +/- 10 kHz |
| 470.4 +/- 10 kHz |
| 480 +/- 10 kHz |
| 499.2 +/- 10 kHz |
| 508.8 +/- 10 kHz |
| 518.4 +/- 10 kHz |

1.6.5 GPS

| GPS | Non Keypad DP3441 |
|---|----------------------|
| TTFF (Time To First Fix) Cold Start @ -130dBm (95%) | ≤ 60 seconds |
| TTFF (Time To First Fix) Hot Start @ -130 dBm (95%) | ≤10 seconds |
| Horizontal Accuracy (2D Accuracy) Cold Start | < 5 meters |
| Accuracy specs are for long-term tracking (95th percentile values > 5 satellites visible at a nominal -130 dBm signal strength) | |

1.6.6 Bluetooth

| Bluetooth® | Display | Non-Display |
|------------|---|-------------|
| Version | Supports Bluetooth 2.1+ EDR Specification | |
| Range | Class 2, 10 meters | |

1.6.7 MIL Standard

| Military Standards | | | | | | | | | | |
|--------------------|---------|-----------------|---------|-------------|---------|-------------|---------|---------------|---------|------------|
| Applicable MIL-STD | 810C | | 810D | | 810E | | 810F | | 810G* | |
| | Methods | Procedures | Methods | Procedures | Methods | Procedures | Methods | Procedures | Methods | Procedures |
| Low Pressure | 500.1 | I | 500.2 | II | 500.3 | II | 500.4 | II | 500.5 | II |
| High Temperature | 501.1 | I, II | 501.2 | I/A1, II/A1 | 501.3 | I/A1, II/A1 | 501.4 | I/Hot, II/Hot | 501.5 | I/A1, II |
| Low Temperature | 502.1 | I | 502.2 | I/C3, II/C1 | 502.3 | I/C3, II/C1 | 502.4 | I/C3, II/C1 | 502.5 | I, II |
| Temperature Shock | 503.1 | – | 503.2 | I/A1/C3 | 503.3 | I/A1/C3 | 503.4 | I | 503.5 | I/C |
| Solar Radiation | 505.1 | II | 505.2 | I | 505.3 | I | 505.4 | I | 505.5 | I/A1 |
| Rain | 506.1 | I, II | 506.2 | I, II | 506.3 | I,II | 506.4 | I, III | 506.5 | I, III |
| Humidity | 507.1 | II | 507.2 | II | 507.3 | II | 507.4 | – | 507.5 | II |
| Salt fog | 509.1 | – | 509.2 | – | 509.3 | – | 509.4 | – | 509.5 | – |
| Dust | 510.1 | I | 510.2 | I | 510.3 | I | 510.4 | I | 510.5 | I |
| Vibration | 514.2 | VIII/F, Curve-W | 514.3 | I/10, II/3 | 514.4 | I/10, II/3 | 514.5 | I/24 | 514.6 | 1/24, II/5 |
| Shock | 516.2 | I, II | 516.3 | I, IV | 516.4 | I, IV | 516.5 | I, IV | 516.6 | I, IV, VI |

NOTE *Tested to MIL standard G which supersedes previous version

1.6.8 Environmental Specification

| Environmental Specifications | |
|------------------------------|-----------------------|
| *Operating Temperature | -30 °C to +60 °C |
| Storage Temperature | -40 °C to +85 °C |
| Thermal Shock | Per MIL-STD |
| Humidity | Per MIL-STD |
| ESD | IEC 61000-4-2 Level 3 |
| Dust and Water Intrusion | IEC 60529 -IP67 |
| Packaging Test | MIL-STD 810F and G |

* Operating temperature specification with Lilon battery is -10 °C to +60 °C.

Chapter 2 Test Equipment and Service Aids

2.1 Recommended Test Equipment

The list of equipment contained in Table 2-1 includes most of the standard test equipment required for servicing Motorola portable radios.

Table 2-1. Recommended Test Equipment

| Equipment | Characteristics | Example | Application |
|--------------------------|--|--|---|
| Service Monitor | Can be used as a substitute for items marked with an asterisk (*) | Aeroflex 3920 (www.aeroflex.com) | Frequency/deviation meter and signal generator for wide-range troubleshooting and alignment |
| Digital RMS Multimeter * | 100 μ V to 300 V 5 Hz to 1 MHz 10 Mega Ohm Impedance | Fluke 179 or equivalent (www.fluke.com) | AC/DC voltage and current measurements. Audio voltage measurements |
| RF Signal Generator * | 100 MHz to 1 GHz -130 dBm to +10 dBm FM Modulation 0 kHz to 10 kHz Audio Frequency 100 Hz to 10 kHz | Agilent N5181A (www.agilent.com), Ramsey RSG1000B (www.ramseyelectronics.com), or equivalent | Receiver measurements |
| Oscilloscope * | 2 Channel 50 MHz Bandwidth 5 mV/div to 20 V/div | Leader LS8050 (www.leaderusa.com), Tektronix TDS1001b (www.tektronix.com), or equivalent | Waveform measurements |
| Power Meter and Sensor * | 5% Accuracy 100 MHz to 500 MHz 50 Watts | Bird 43 Thruline Watt Meter (www.bird-electronic.com) or equivalent | Transmitter power output measurements |
| RF Millivolt Meter | 100 mV to 3 V RF 10 kHz to 1 GHz | Boonton 92EA (www.boonton.com) or equivalent | RF level measurements |
| Power Supply | 0 V to 32 V 0 A to 20 A | B&K Precision 1790 (www.bkprecision.com) or equivalent | Voltage supply |

2.2 Service Aids

Table 2-2 lists the service aids recommended for working on the radio. While all of these items are available from Motorola, most are standard workshop equipment items, and any equivalent item capable of the same performance may be substituted for the item listed.

Table 2-2. Service Aids

| Motorola Part No. | Description | Application |
|-------------------|---|--|
| RLN4460_ | Portable Test Set | Enables connection to the audio/accessory jack. Allows switching for radio testing. |
| GMVN5141_ | Customer Programming Software on CD-ROM | Allows servicer to program radio parameters, tune and troubleshoot radios. |
| PMKN4115_* | Portable Programming Cable | This cable connects the radio to a USB port for radio programming and data applications. |
| PMKN4117_* | Portable Programming, Testing & Alignment Cable | This cable connects the radio to a USB port for radio programming, testing and alignment. NOTE: <ol style="list-style-type: none"> 1. This cable does not support external PTT using test box. 2. This cable does not auto route to external Audio path once the cable is attached. 3. All test instructions are carried out through software tool (e.g. CPS, Tuner, etc.) |
| PMNN4452_ | 7.5V Universal Battery Eliminator | Connects to radio via battery eliminator cable. |
| PMLN6154_ | RF Adaptor | Adapts radio's antenna port to BNC cabling of test equipment. |
| PMLN6422_ | RF Cable | This cable measures RF related measurements. |
| 66012072001 | Chassis and Knob Opener | Enables the removal of chassis from radio housing. |
| PMLN6584_ | RF Adaptor Holder | Holds RF Adaptor to radio. |
| NLN9839_ | Vacuum Pump Kit | Allows servicer to test for leakages. |
| NTN4265_ | Pressure Pump Kit | Allows servicer to locate leakages. |
| 5871134M01 | Connector Fitting | This connector allows the vacuum hose to be connected to the radio chassis. |
| 3271133M01 | Fitting Seal | This seal secures the connector fitting to the radio chassis. |

* Version A of the programming cables will not work with the radio.

2.3 Programming, Testing and Alignment Cable

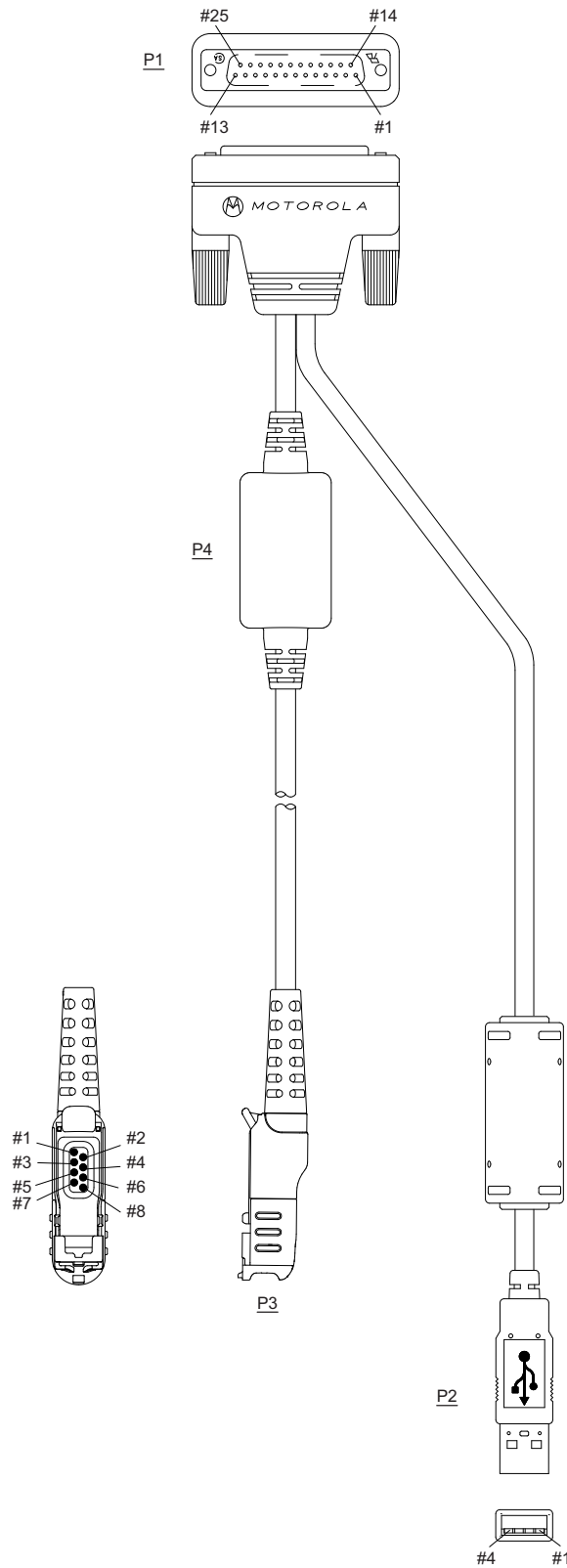


Figure 2-1. Programming, Testing and Alignment Cable

Table 2-3. Pin Configuration of Side Connector

| CONNECTION | | | |
|------------|-----|-----|-------------------|
| P1 | P2 | P3 | |
| Pin | Pin | Pin | Function |
| | 1 | 1 | VCC (5V) |
| | 3 | 5 | DATA+ |
| | 2 | 4 | DATA- |
| 16 | 4 | 8 | GROUND |
| 1 and 5 | | 2 | EXTERNAL SPEAKER+ |
| 2 and 7 | | 3 | EXTERNAL SPEAKER- |
| 17 | | 6 | EXTERNAL MIC+ |
| 16 | | 7 | EXTERNAL MIC- |

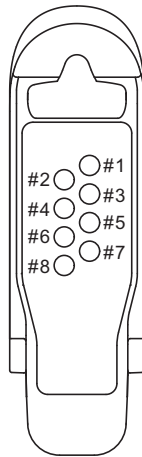


Figure 2-2. Pin Layout of Side Connector

Chapter 3 Transceiver Performance Testing

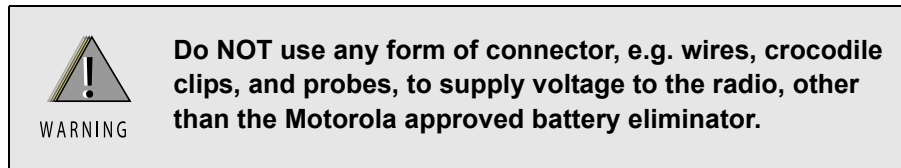
3.1 General

These radios meet published specifications through their manufacturing process by utilizing high-accuracy laboratory-quality test equipment. The recommended field service equipment approaches the accuracy of the manufacturing equipment with few exceptions. This accuracy must be maintained in compliance with the manufacturer's recommended calibration schedule.

Although these radios function in digital and analog modes, all testing is done in analog mode.

3.2 Setup

Supply voltage is provided using a 7.5 VDC power supply. The equipment required for alignment procedures is connected as shown in the Radio Tuning Equipment Setup Diagram, Figure 4-2.



Initial equipment control settings should be as indicated in Table 3-1. The remaining tables in this chapter contain the following related technical data:

| Table Number | Title |
|--------------|--------------------------------|
| 3-2 | Test Environments |
| 3-3 | Test Frequencies |
| 3-4 | Transmitter Performance Checks |
| 3-5 | Receiver Performance Checks |

Table 3-1. Initial Equipment Control Settings

| Service Monitor | Power Supply | Test Set |
|---|------------------------|-----------------------|
| Monitor Mode: Power Monitor | Voltage: 7.5 Vdc | Speaker set: A |
| RF Attn: -70 | DC on/standby: Standby | Speaker/load: Speaker |
| AM, CW, FM: FM | Volt Range: 10V | PTT: OFF |
| Oscilloscope Source: Mod Oscilloscope Horizontal: 10 mSec/Div Oscilloscope Vertical: 2.5 kHz/Div Oscilloscope Trigger: Auto Monitor Image: Hi Monitor Bandwidth: Narrow Monitor Squelch: Middle setting Monitor Vol: 1/4 setting | Current: 2.5A | |

Setup:

Set up the DMR Transmitter and Receiver Test as per Figure 3-1.

- a. Connect the Programming cable to the radio and to the computer.
- b. Remove RF Adaptor plug (orange) as shown in Figure 3-2.
- c. Connect the RF Adaptor to the 50 Ohm RF Input/Output port of the radio as shown in Figure 3-3.

Connect the other end of the RF Adaptor to the T/R port of the Radio Test Set 3920 using the RF cable shown in Figure 3-1.

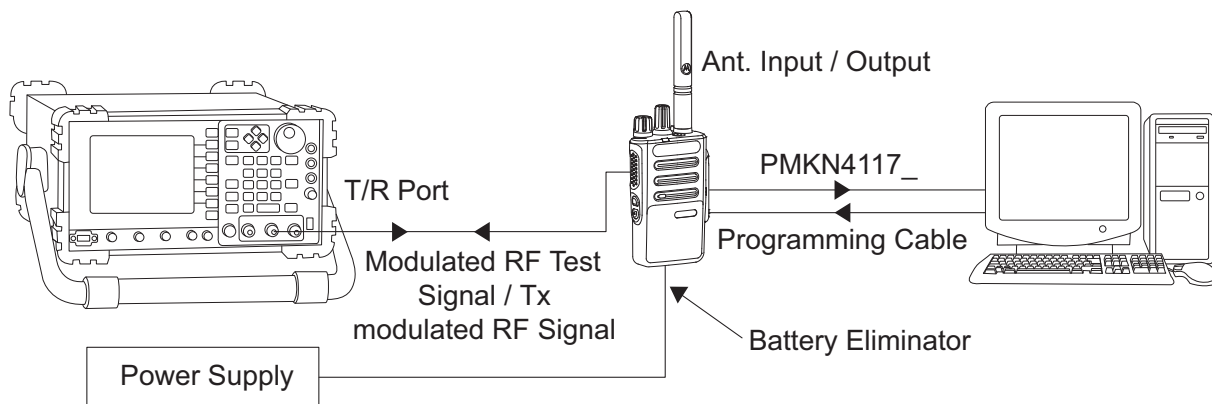


Figure 3-1. DMR Radio Transmitter and Receiver Testing Setup

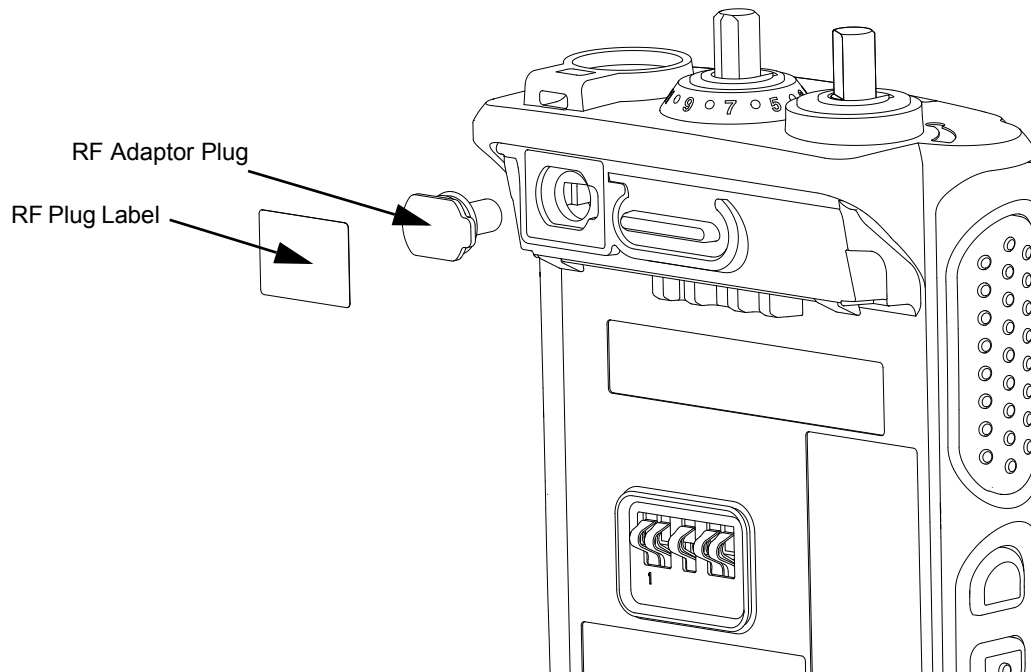


Figure 3-2. RF Adaptor Plug

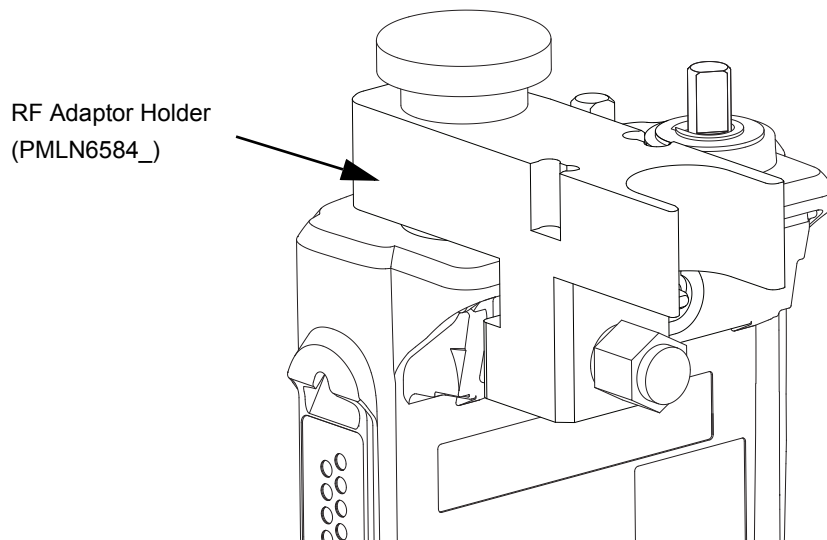


Figure 3-3. Connect RF Adaptor Holder to radio RF input/output port

3.3 Test Mode

3.3.1 Entering Test Mode

1. Turn the radio on.
2. Within 10 seconds after “Self Test” is complete, press **Side Button 2** five times in succession.
3. The radio beeps.

3.3.2 RF Test Mode

When the radio is operating in its normal environment, the radio's microcontroller controls the RF channel selection, transmitter key-up, and receiver muting, according to the customer codeplug configuration. However, when the unit is on the bench for testing, alignment, or repair, it must be removed from its normal environment via a special routine, called **TEST MODE** or “air test”.

1. Each short press of **Side Button 2** changes the test environment (CSQ->TPL->DIG->USQ ->CSQ). The radio beeps once when radio toggles to CSQ, beeps twice for TPL, beeps three times for DIG and beeps four times for USQ.

NOTE DIG is digital mode and other test environments are analog mode as described in Table 3-2.

Table 3-2. Test Environments

| No. of Beeps | Description | Function |
|--------------|-------------------------|--|
| 1 | Carrier Squelch (CSQ) | RX: if carrier detected TX: mic audio |
| 2 | Tone Private-Line (TPL) | RX: unsquelch if carrier and tone detected TX: mic audio + tone |
| 3 | Digital Mode (DIG) | RX: if carrier detected TX: mic audio |
| 4 | Unsquelch (USQ) | RX: constant unsquelch TX: mic audio |

2. Each short press of **Side Button 1** toggles the channel spacing between 25 kHz, 12.5 kHz and 20 kHz. The radio beeps once when it toggles to 20 kHz, beeps twice for 25 kHz and beeps three times for 12.5 kHz.
3. Turning of the **Channel Knob** changes the test channel from 1 to 14 as described in Table 3-3. The radio beeps in each position.

Table 3-3. Test Frequencies

| Channel Selector Switch Position | Test Channel | UHF | VHF |
|----------------------------------|----------------------------|------------------|--------------------|
| 1 Low Power 9 High Power | TX#1 or #9 RX#1 or #9 | 403.15 403.15 | 136.075 136.075 |
| 2 Low Power 10 High Power | TX#2 or #10 RX#2 or #10 | 423.25 423.25 | 142.575 142.575 |
| 3 Low Power 11 High Power | TX#3 or #11 RX#3 or #11 | 444.35 444.35 | 146.575 146.575 |
| 4 Low Power 12 High Power | TX#4 or #12 RX#4 or #12 | 465.45 465.45 | 155.575 155.575 |
| 5 Low Power 13 High Power | TX#5 or #13 RX#5 or #13 | 485.55 485.55 | 161.575 161.575 |
| 6 Low Power 14 High Power | TX#6 or #14 RX#6 or #14 | 506.65 506.65 | 167.575 167.575 |
| 7 Low Power 15 High Power | TX#7 or #15 RX#7 or #15 | 526.75 526.75 | 173.975 173.975 |
| 8 Low Power 16 High Power | TX#8 or #16 RX#8 or #16 | 527.00 527.00 | 174.000 174.000 |

Table 3-4. Transmitter Performance Checks

| Test Name | Communications Analyzer | Radio | Test Set | Comments |
|-----------------------------|---|--|---|---|
| Reference Frequency | Mode: PWR MON 4th channel test frequency* Monitor: Frequency error Input at RF In/Out | TEST MODE, Test Channel 4 carrier squelch | PTT to continuously transmit (during the performance check) | Frequency error to be ± 201 Hz (UHF) ± 68 Hz (VHF) |
| Power RF | As above | As above | As above | Low Power: 0.9 – 1.5 W (VHF/UHF) High Power: 4.0 – 4.8 W (UHF) High Power: 5.0 – 6.0 W (VHF) |
| Voice Modulation | Mode: PWR MON 4th channel test frequency* atten to -70, input to RF In/Out Monitor: DVM: AC Volts Set 1 kHz Mod Out level for 0.025 Vrms at test set, 80 mVrms at AC/DC test set jack | As above | As above, meter selector to mic | Deviation: ≥ 4.0 kHz but ≤ 5.0 kHz (25 kHz Ch Sp). |
| Voice Modulation (internal) | Mode: PWR MON 4th channel test frequency* atten to -70, input to RF In/Out | TEST MODE, Test Channel 4 carrier squelch output at antenna | Remove modulation input | Press PTT switch on radio. Say “four” loudly into the radio mic. Measure deviation: ≥ 4.0 kHz but ≤ 5.0 kHz (25 kHz Ch Sp) |
| TPL Modulation | As above 4th channel test frequency* BW to narrow | TEST MODE, Test Channel 4 TPL | As above | Deviation: ≥ 500 Hz but ≤ 1000 Hz (25 kHz Ch Sp). |
| RF Power | DMR mode. Slot 1 Power and Slot 2 Power | TEST MODE, Digital Mode, transmit without modulation | Key up radio without modulation using Tuner | TTR Enable is needed and IFR to be set to trigger mode with signal level ~ 1.5 V |
| FSK Error | DMR Mode. FSK Error | TEST MODE, Digital Mode, transmit with O.153 test pattern | Key up radio with O.153 test pattern modulation using Tuner | Not Exceed 5% |
| Magnitude Error | DMR Mode. Magnitude error | As above | As above | Not Exceed 1% |

Table 3-4. Transmitter Performance Checks (Continued)

| Test Name | Communications Analyzer | Radio | Test Set | Comments |
|------------------|----------------------------|----------|----------|--|
| Symbol Deviation | DMR Mode. Symbol Deviation | As above | As above | Symbol Deviation should be within 648 Hz +/- 10% and 1944 Hz +/- 10% |
| Transmitter BER | DMR Mode | As above | As above | Transmitter BER should be 0% |

* See Table 3-3.

Table 3-5. Receiver Performance Checks

| Test Name | Communications Analyzer | Radio | Test Set | Comments |
|--|--|---|---|---|
| Reference Frequency | Mode: PWR MON 4th channel test frequency* Monitor: Frequency error Input at RF In/Out | TEST MODE, Test Channel 4 carrier squelch output at antenna | PTT to continuously transmit (during the performance check) | Frequency error to be ± 201 Hz (UHF) ± 68 Hz (VHF) |
| Rated Audio | Mode: GEN Output level: 1.0 mV RF 6th channel test frequency* Mod: 1 kHz tone at 3 kHz deviation Monitor: DVM: AC Volts | TEST MODE Test Channel 6 carrier squelch | PTT to OFF (center), meter selector to Audio PA | Set volume control to 2.83 Vrms |
| Distortion | As above, except to distortion | As above | As above | Distortion < 3.0% |
| Sensitivity (SINAD) | As above, except SINAD, lower the RF level for 12 dB SINAD. | As above | PTT to OFF (center) | RF input to be < 0.35 μ V |
| Noise Squelch Threshold (only radios with conventional system need to be tested) | RF level set to 1 mV RF | As above | PTT to OFF (center), meter selection to Audio PA, speaker/load to speaker | Set volume control to 2.83 Vrms |
| | As above, except change frequency to a conventional system. Raise RF level from zero until radio unsquelches. | Out of TEST MODE; select a conventional system | As above | Unsquelch to occur at < 0.25 μ V. Preferred SINAD = 9 – 10dB |
| Receiver BER | IFR DMR mode. Signal generator with O.153 test pattern | Test Mode, Digital Mode, receive O.153 test pattern | Read BER using Tuner. Adjust RF level to get 5% BER | RF level to be < 0.35 μ V for 5% BER |

Table 3-5. Receiver Performance Checks (Continued)

| Test Name | Communications Analyzer | Radio | Test Set | Comments |
|---------------------------|---|--|---|-----------------------------------|
| Receiver Rated Audio | IFR DMR Mode. Signal generator with 1031 test pattern | Test Mode, Digital Mode, receive 1031 test pattern | RF level = -47 dBm. Set audio analyzer to read Vrms. Adjust volume to get rated audio | Adjust volume until Vrms = 2.83 V |
| Receiver Audio Distortion | IFR DMR Mode. Signal generator with 1031 test pattern | As above | As above. Then set audio analyzer to measure distortion | Not exceed 5% |

* See Table 3-3.

3.3.3 LED Test Mode

1. Press and hold **Side Button 1** in RF Test Mode. The radio beeps once.
2. Upon any button/key press, the radio lights up the red LED.
3. Consequently, upon any button/key press, the red LED is turned off and the radio turns on the green LED.
4. Consequently, upon any button/key press, the green LED is turned off the radio shall turn on both LEDs.

3.3.4 Speaker Tone Test Mode

1. Press and hold **Side Button 1** after LED Test Mode. The radio beeps once.
2. The radio generates a 1 kHz tone with the internal speaker.

3.3.5 Earpiece Tone Test Mode

1. Press and hold **Side Button 1** after Speaker Tone Test Mode. The radio beeps once.
2. The radio generates a 1 kHz tone with the earpiece.

3.3.6 Audio Loopback Earpiece Test Mode

1. Press and hold **Side Button 1** after Earpiece Tone Test Mode. The radio beeps once.
2. The radio shall route any audio on the external mic to the earpiece.

3.3.7 Battery Check Test Mode

1. Press and hold **Side Button 1** after Audio Loopback Earpiece Test Mode. The radio beeps once.
2. The radio LED lights up accordingly; green LED for High Battery Level, orange LED for Mid Battery Level and blinking red LED for Low Battery Level.

3.3.8 Button/Knob/PTT Test Mode

1. Press and hold **Side Button 1** after Battery Check Test Mode. The radio beeps once.
2. Rotate the **Volume Knob**; the radio beeps at each position.
3. Rotate the **Channel Knob**; the radio beeps at each position.
4. Press **Side Button 1**; the radio beeps; release, the radio beeps.
5. Press **Side Button 2**; the radio beeps; release, the radio beeps.
6. Press the **PTT Switch**; the radio beeps; release, the radio beeps.
7. Press **Top Button**; the radio beeps; release, the radio beeps.

Notes

Chapter 4 Radio Programming and Tuning

4.1 Introduction

This chapter provides an overview of the MOTOTRBO Customer Programming Software (CPS), as well as the Tuner and AirTracer applications, which are all designed for use in a Windows 2000/XP/7/8 environment. These programs are available in one kit as listed in Table 4-1. An Installation Guide is also included with the kit.

NOTE Refer to the appropriate program on-line help files for the programming procedures.

Table 4-1. Software Installation Kits Radio Tuning Setup

| Description | Part Number |
|---|-------------|
| MOTOTRBO CPS, Tuner and AirTracer Applications CD | GMVN5141_ |

4.2 Customer Programming Software Setup

The CPS programming setup, shown in Figure 4-1 is used to program the radio.

NOTE Refer to appropriate program on-line help files for the programming procedures.



Caution

Computer USB ports can be sensitive to Electrostatic Discharge. Do not touch exposed contacts on cable when connected to a computer.

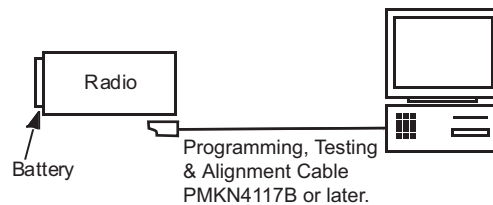


Figure 4-1. CPS Programming Setup

4.3 AirTracer Application Tool

The MOTOTRBO AirTracer application tool has the ability to capture over-the-air digital radio traffic and save the captured data into a file. The AirTracer application tool can also retrieve and save internal error logs from MOTOTRBO radios. The saved files can be analyzed by trained Motorola personnel to suggest improvements in system configurations or to help isolate problems.

4.4 Radio Tuning Setup

NOTE Refer to appropriate program on-line help files for the programming procedures.

A personal computer (PC), Windows 2000/XP/7/8 and a tuner program are required to tune the radio. To perform the tuning procedures, the radio must be connected to the PC, Test Box, and test equipment setup as shown in Figure 4-2.

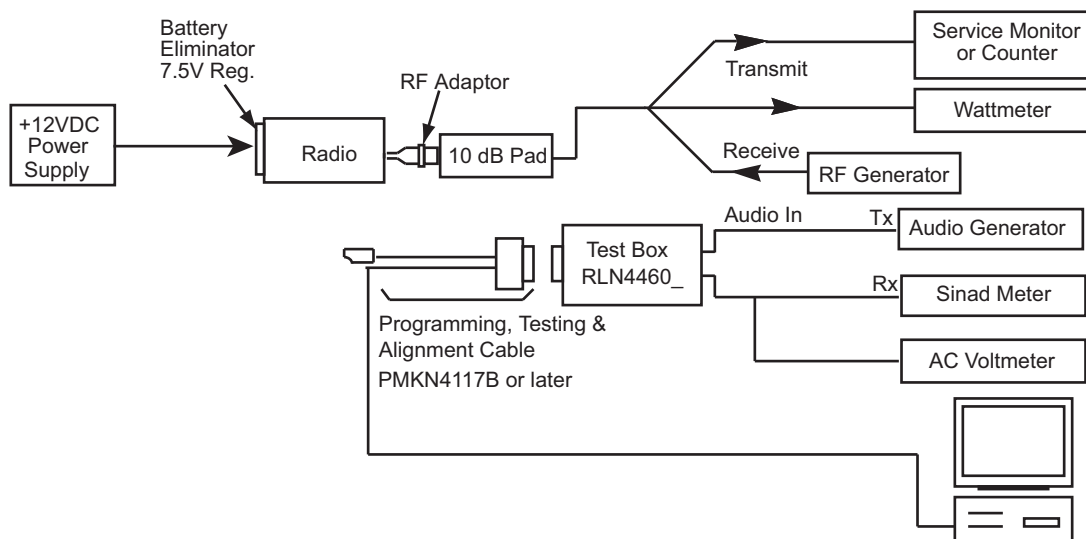


Figure 4-2. Radio Tuning Equipment Setup

4.5 RF Adaptor Assembly

1. Remove RF Plug Label and use tweezers to remove the RF Adaptor Plug.

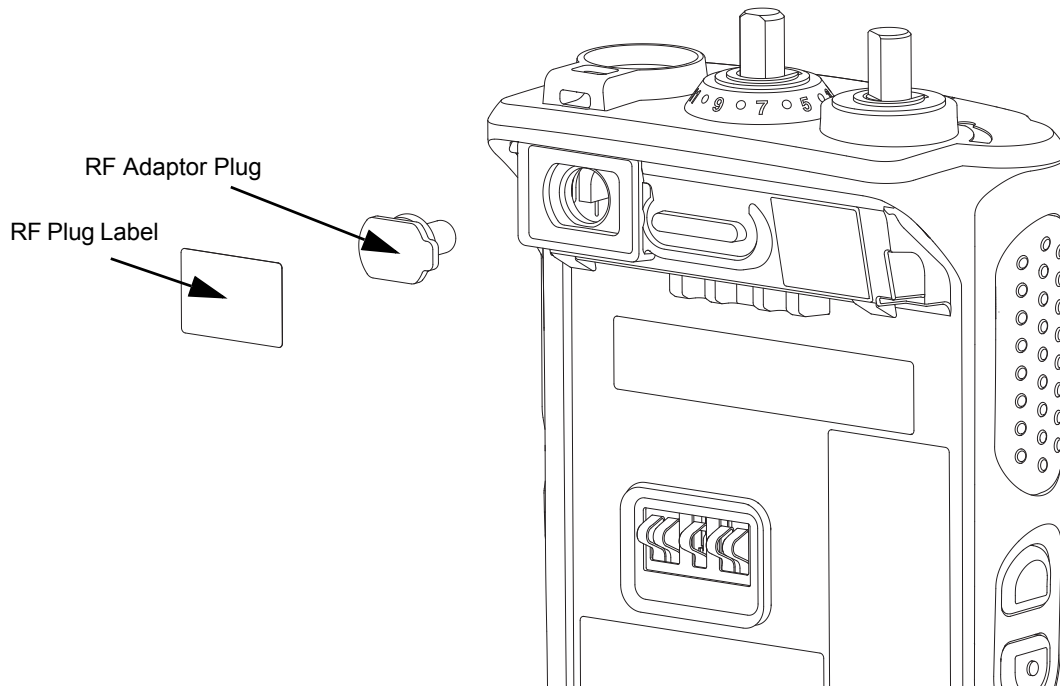


Figure 4-3. RF Plug Label and RF Adaptor Plug Removal

2. Align RF Adaptor Holder to the antenna opening of the housing. The RF Adaptor Holder should fit snugly around the outer wall of the antenna opening.

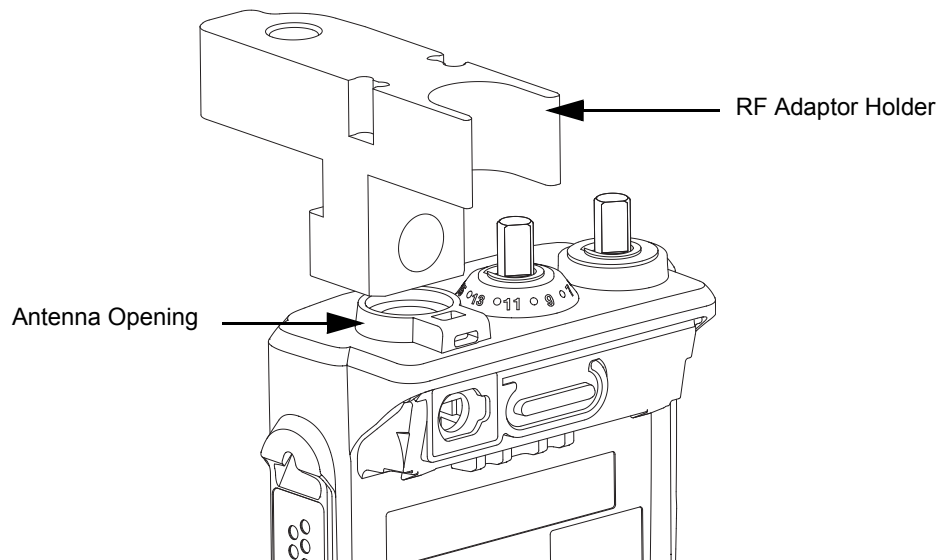


Figure 4-4. RF Adaptor Holder Align

3. Fasten the screw provided to hold the RF Adaptor Holder in place. This is followed by slotting the RF Adaptor into the RF Adaptor Holder slot.

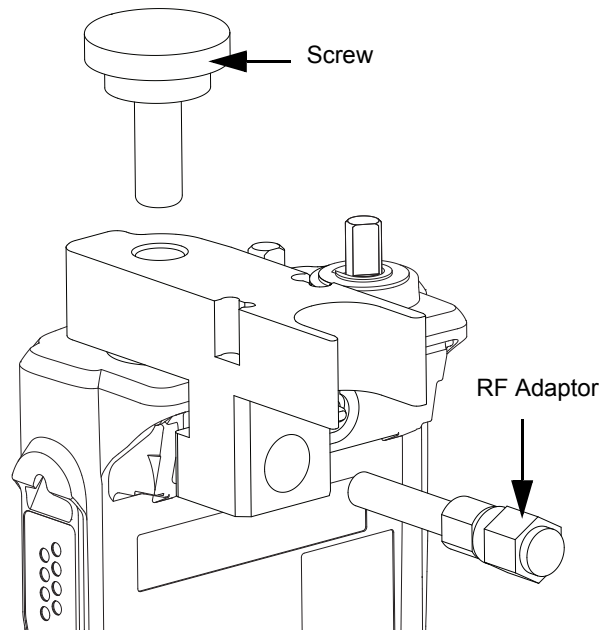


Figure 4-5. RF Adaptor Fasten and Slot

4. The final assembly should look like this.

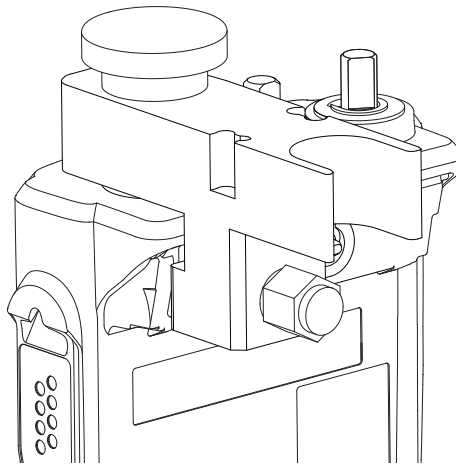


Figure 4-6. RF Adaptor in Place

Chapter 5 Disassembly/Reassembly Procedures

5.1 Introduction

This chapter provides details about the following:

- Preventive maintenance (inspection and cleaning).
- Safe handling of CMOS and LDMOS devices.
- Disassembly and reassembly of the radio.
- Repair procedures and techniques.

5.2 Preventive Maintenance

Periodic visual inspection and cleaning is recommended.

5.2.1 Inspection

Check that the external surfaces of the radio are clean, and that all external controls and switches are functional. It is not recommended to inspect the interior electronic circuitry.

5.2.2 Cleaning Procedures

The following procedures describe the recommended cleaning agents and the methods to be used when cleaning the external and internal surfaces of the radio. External surfaces include the front cover, housing assembly and battery case. These surfaces should be cleaned whenever a periodic visual inspection reveals the presence of smudges, grease, and/or grime.

NOTE Internal surfaces should be cleaned only when the radio is disassembled for service or repair.

The only recommended agent for cleaning the external radio surfaces is a 0.5% solution of a mild dishwashing detergent in water. The only factory recommended liquid for cleaning the printed circuit boards and their components is isopropyl alcohol (100% by volume).



Caution

The effects of certain chemicals and their vapors can have harmful results on certain plastics. Avoid using aerosol sprays, tuner cleaners and other chemicals.

Cleaning External Plastic Surfaces

Apply the 0.5% detergent-water solution sparingly with a stiff, non-metallic, short-bristled brush to work all loose dirt away from the radio. Use a soft, absorbent, lintless cloth or tissue to remove the solution and dry the radio. Make sure that no water remains entrapped near the connectors, cracks, or crevices.

Cleaning Internal Circuit Boards and Components

Isopropyl alcohol (100%) may be applied with a stiff, non-metallic, short-bristled brush to dislodge embedded or caked materials located in hard-to-reach areas. The brush stroke should direct the dislodged material out and away from the inside of the radio. Make sure that controls or tunable components are not soaked with alcohol. Do not use high-pressure air to hasten the drying process since this could cause the liquid to collect in unwanted places. After completing of the cleaning process, use a soft, absorbent, lintless cloth to dry the area. Do not brush or apply any isopropyl alcohol to the frame, front cover or back cover.

NOTE Always use a fresh supply of alcohol and a clean container to prevent contamination by dissolved material (from previous usage).



Caution

Use all chemicals as prescribed by the manufacturer. Be sure to follow all safety precautions as defined on the label or material safety data sheet.

5.3 Safe Handling of CMOS and LDMOS Devices

Complementary metal-oxide semiconductor (CMOS) devices are used in this family of radios, and are susceptible to damage by electrostatic or high voltage charges. Damage can be latent, resulting in failures occurring weeks or months later. Therefore, special precautions must be taken to prevent device damage during disassembly, troubleshooting, and repair.

Handling precautions are mandatory for CMOS circuits and are especially important in low humidity conditions. DO NOT attempt to disassemble the radio without first referring to the CMOS CAUTION paragraph in the Disassembly and Reassembly section of the manual.

DO NOT attempt to disassemble the radio without first referring to the following CAUTION statement.



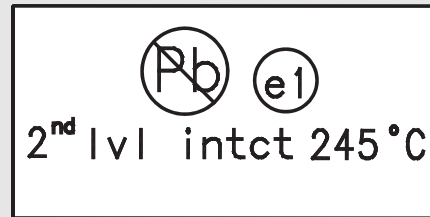
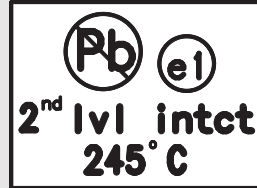
Caution

This radio contains static-sensitive devices. Do not open the radio unless you are properly grounded. Take the following precautions when working on this unit:

- Store and transport all CMOS/LDMOS devices in conductive material so that all exposed leads are shorted together. Do not insert CMOS/LDMOS devices into conventional plastic “snow” trays used for storage and transportation of other semiconductor devices.
- Ground the working surface of the service bench to protect the CMOS/LDMOS device. We recommend using the Motorola Static Protection Assembly (part number 0180386A82), which includes a wrist strap, two ground cords, a table mat, and a floor mat, ESD shoes and an ESD chair.
- Wear a conductive wrist strap in series with a 100k resistor to ground. (Replacement wrist straps that connect to the bench top covering are Motorola part number 4280385A59).
- Do not wear nylon clothing while handling CMOS/LDMOS devices.
- Do not insert or remove CMOS/LDMOS devices with power applied. Check all power supplies used for testing CMOS/LDMOS devices to be certain that there are no voltage transients present.
- When straightening CMOS/LDMOS pins, provide ground straps for the apparatus used.
- When soldering, use a grounded soldering iron.
- If at all possible, handle CMOS/LDMOS devices by the package and not by the leads. Prior to touching the unit, touch an electrical ground to remove any static charge that you may have accumulated. The package and substrate may be electrically common. If so, the reaction of a discharge to the case would cause the same damage as touching the leads.

5.4 Repair Procedures and Techniques – General

NOTE Environmentally Preferred Products (EPP) (refer to the marking on the printed circuit boards — examples shown below) were developed and assembled using environmentally preferred components and solder assembly techniques to comply with the European Union's **Restriction of Hazardous Substances (ROHS 2) Directive 2011/65/EU** and **Waste Electrical and Electronic Equipment (WEEE) Directive 2012/19/EU**. To maintain product compliance and reliability, use only the Motorola specified parts in this manual.



Any rework or repair on Environmentally Preferred Products must be done using the appropriate lead-free solder wire and lead-free solder paste as stated in the following table:

Table 5-1. Lead Free Solder Wire Part Number List

| Motorola Part Number | Alloy | Flux Type | Flux Content by Weight | Melting Point | Supplier Part number | Diameter | Weight |
|----------------------|--------------------|-------------|------------------------|---------------|----------------------|----------|-----------|
| 1088929Y01 | 95.5Sn/3.8Ag/0.7Cu | RMA Version | 2.7-3.2% | 217C | 52171 | 0.015" | 1lb spool |

Table 5-2. Lead Free Solder Paste Part Number List

| Motorola Part Number | Manufacturer Part Number | Viscosity | Type | Composition & Percent Metal | Liquid Temperature |
|----------------------|--------------------------|-----------------------------------|-----------------------|----------------------------------|--------------------|
| 1085674C03 | NC-SMQ230 | 900-1000KCPs Brookfield (5rpm) | Type 3 (-325/+500) | (95.5%Sn-3.8%Ag-0.7%Cu) 89.3% | 217°C |

Parts Replacement and Substitution

When damaged parts are replaced, identical parts should be used. If the identical replacement part is not locally available, check the parts list for the proper Motorola part number and order the part

Rigid Circuit Boards

This family of radios uses bonded, multi-layer, printed circuit boards. Since the inner layers are not accessible, some special considerations are required when soldering and unsoldering components. The printed-through holes may interconnect multiple layers of the printed circuit. Therefore, exercise care to avoid pulling the plated circuit out of the hole.

When soldering near a connector:

- Avoid accidentally getting solder in the connector.
- Be careful not to form solder bridges between the connector pins.
- Examine your work closely for shorts due to solder bridges.

For soldering components with Hot-Air or infra red solder systems, please check your user guide of the solder system to get information on solder temperature and time for the different housings of the integrated circuits and other components.

5.5 Disassembling and Reassembling the Radio – General

When disassembling and reassembling the radio, it is important to pay particular attention to the snaps and tabs, and how parts align with each other.

The following tools are required for disassembling the radio:

- TORX™ T4, T6 and T8 screwdriver
- Chassis and Knob Opener (66012072001)

The following item and tools are required for reassembling the radio:

- Grease (1185937A01)
- TORX™ T4, T6 and T8 screwdriver
- Vacuum Pump Kit (NLN9839) – Radio Immersibility Test
- Pressure Pump Kit (NTN4265) – Radio Immersibility Test
- Connector Fitting (5871134M01) – Radio Immersibility Test
- Fitting Seal (3271133M01) – Radio Immersibility Test
- Seal Port (3286058L01)
- Label Ventilation (5478220A01)

If a unit requires further testing or service than is customarily performed at the basic level, please send the radio to a Motorola Service Center.

5.6 Radio Disassembly – Detailed

5.6.1 Front Cover from Chassis Disassembly

1. Turn off the radio.
2. Remove the battery:
 - a. Release the battery latches by moving them downwards.
 - b. Remove the battery from the radio.
3. Remove the antenna by turning it counterclockwise.

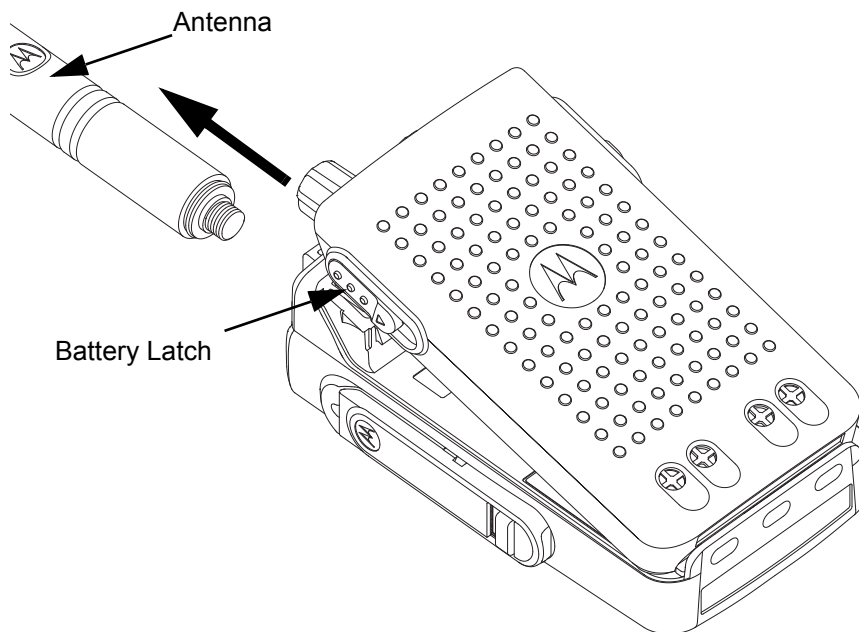


Figure 5-1. Antenna and Battery removal.

4. Remove the Channel Selector Knob and On/Off Volume Knob from their shafts using the knob removal tool.

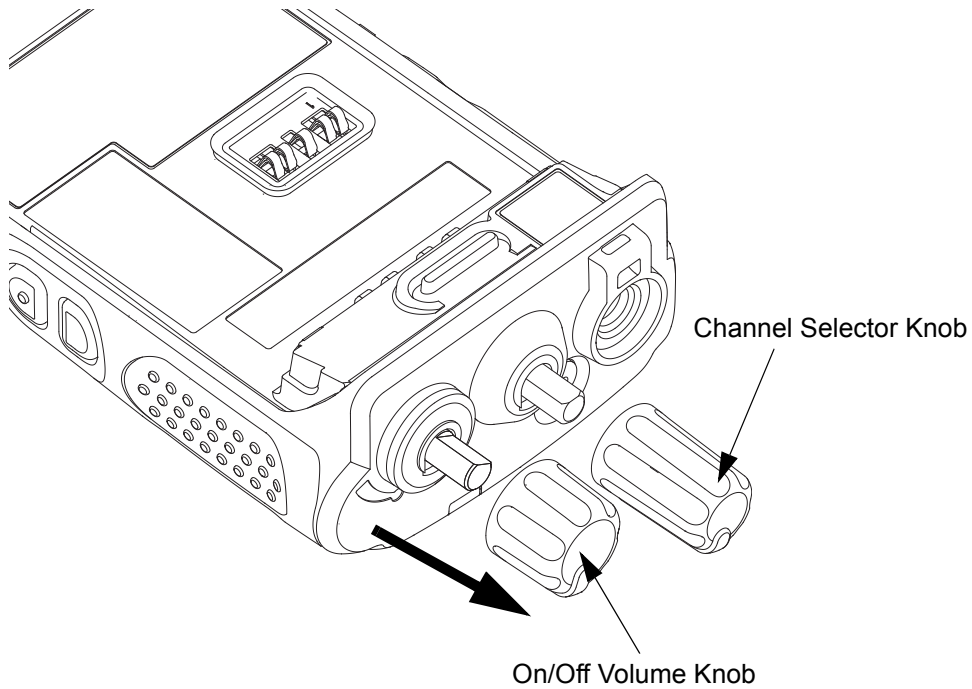


Figure 5-2. Channel Selector and Volume Knob removal.

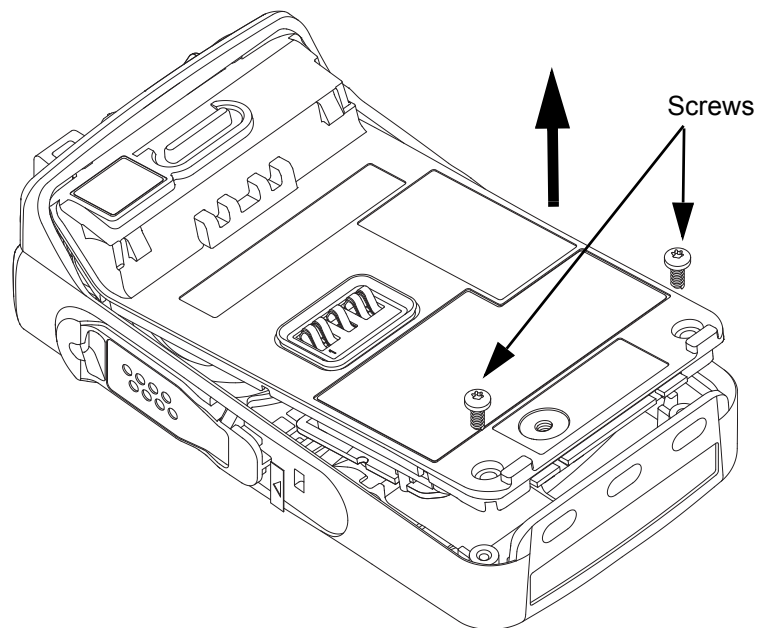


Figure 5-3. Chassis Screw removal

5. Separate the chassis from the Front Cover Assembly as follows:
 - a. Unscrew the screws using a TORX™ T6 screwdriver as shown in Figure 5-3.
 - b. Lift the chassis up till the max.

- c. Slide the chassis out slowly from the housing as shown in Figure 5-4.

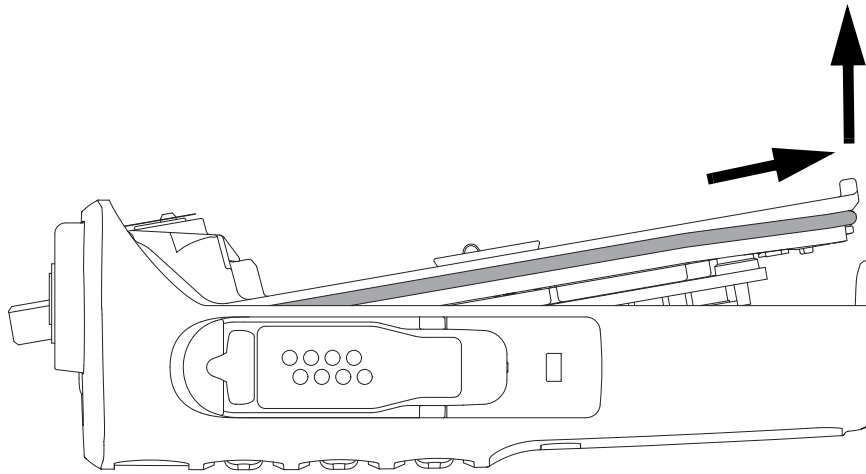


Figure 5-4. Chassis removal

6. Lay the chassis down.
7. Remove the flex from the connector by pulling it out of its connector gently.

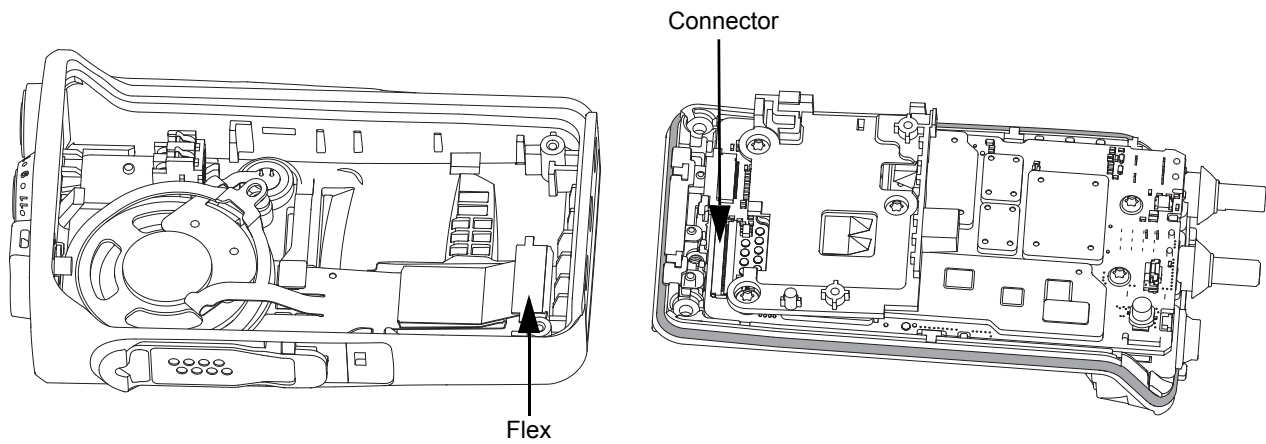


Figure 5-5. Disconnecting the chassis

5.6.2 Chassis Disassembly

1. Remove three screws from the GOB Retainer and two screws from the Main Board with a TORX™ T8 screwdriver.
2. Lift the GOB retainer and main board from chassis.

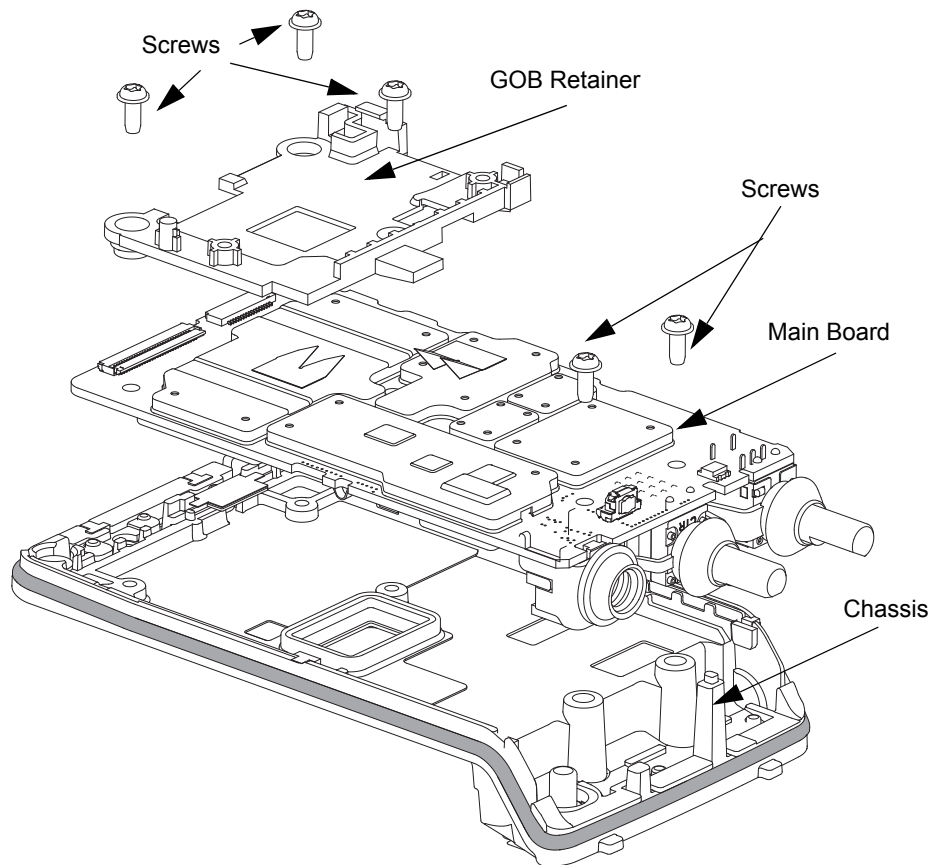


Figure 5-6. Main Board and GOB Retainer removal

3. Remove the main o-ring and Battery Contact Seal.

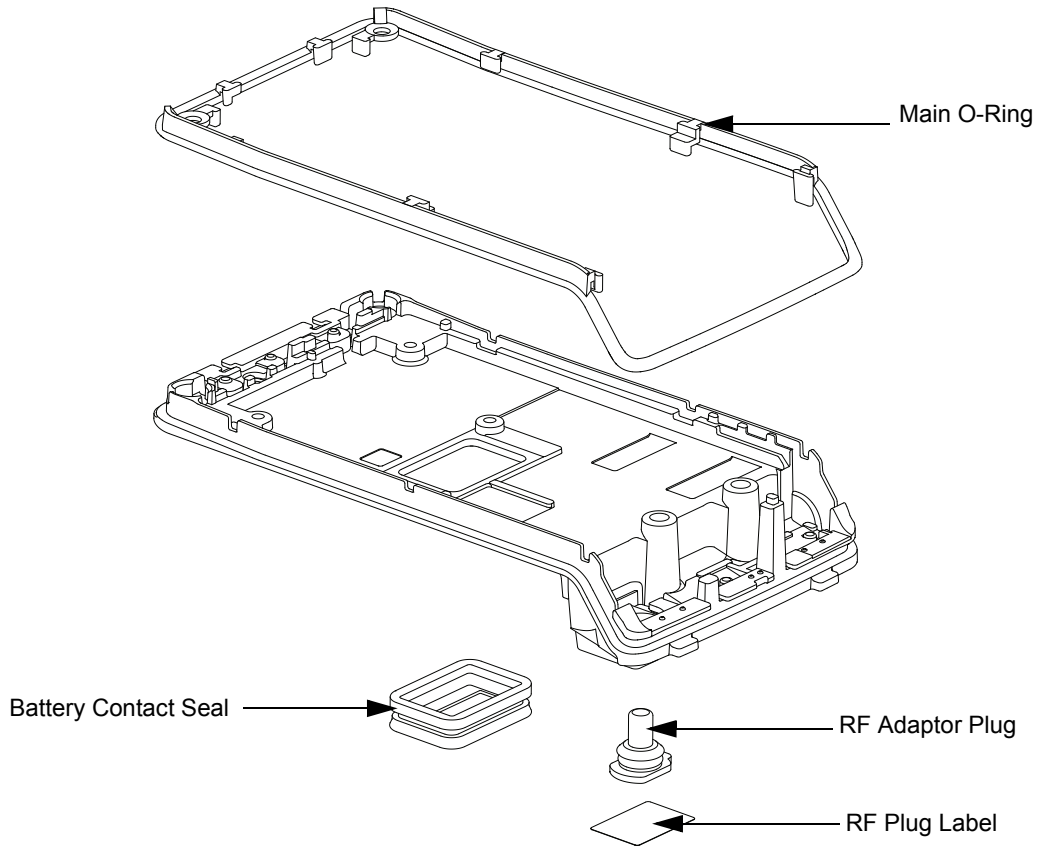


Figure 5-7. O-ring removal

4. Remove the RF plug label and RF Adaptor plug.

5.6.3 Speaker, Microphone, and Universal Connector Flex Disassembly

1. Pull the microphone boot from its seated position.
2. Remove the speaker retainer screw using the TORX T6 screwdriver.
3. Peel-off the universal connector flex circuit escutcheon.
4. Remove the speaker retainer from the speaker assembly.
5. Remove the assembly from the front housing.

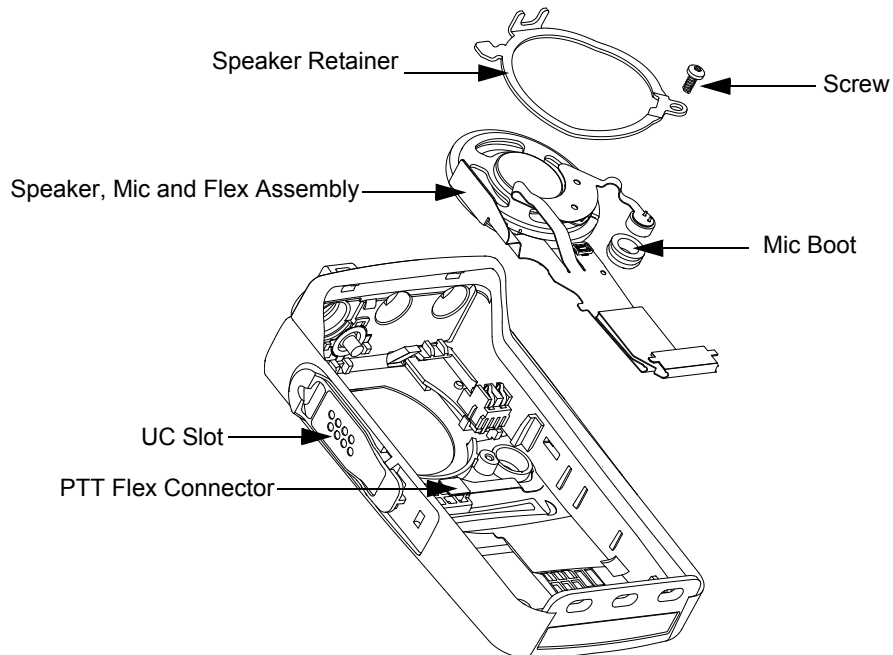


Figure 5-8. Speaker Removal

5.6.4 Emergency Button Assembly Dissassembly

1. The Emergency button can be removed without the use of tools once the speaker retainer is removed.

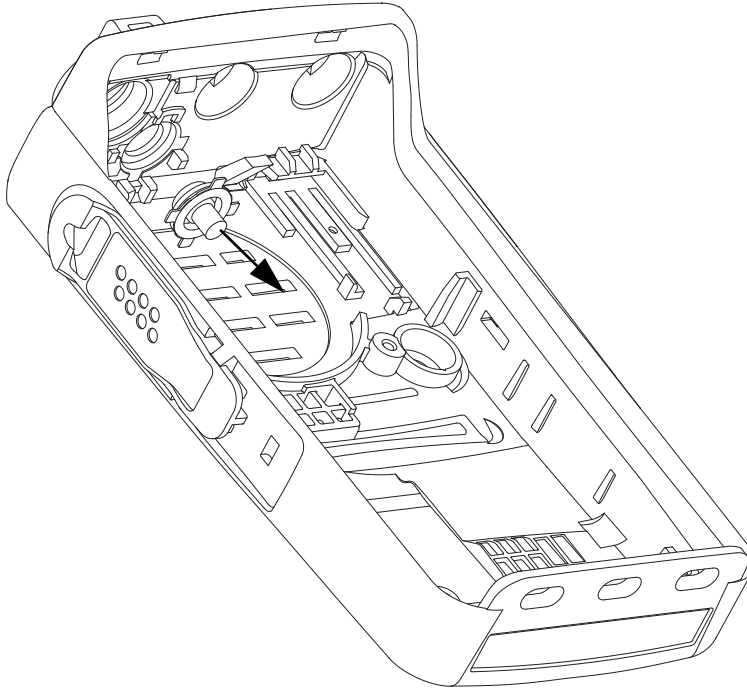


Figure 5-9. Emergency Button Disassembly

5.7 Radio Reassembly – Detailed

5.7.1 Emergency Button and Speaker Reassembly

1. Slot in the emergency button in its proper slot.

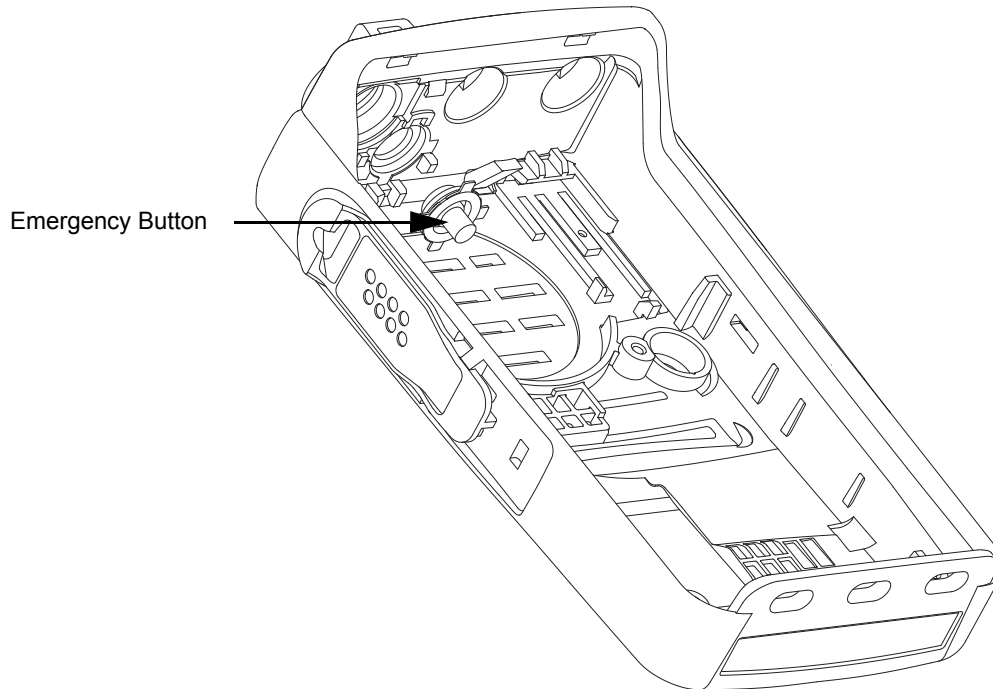


Figure 5-10. Emergency Button Reassembly

2. Insert the flexes through the speaker retainer so that the speaker retainer is placed directly on the speaker assembly.

NOTE Ensure all the flexes are above the speaker retainer.

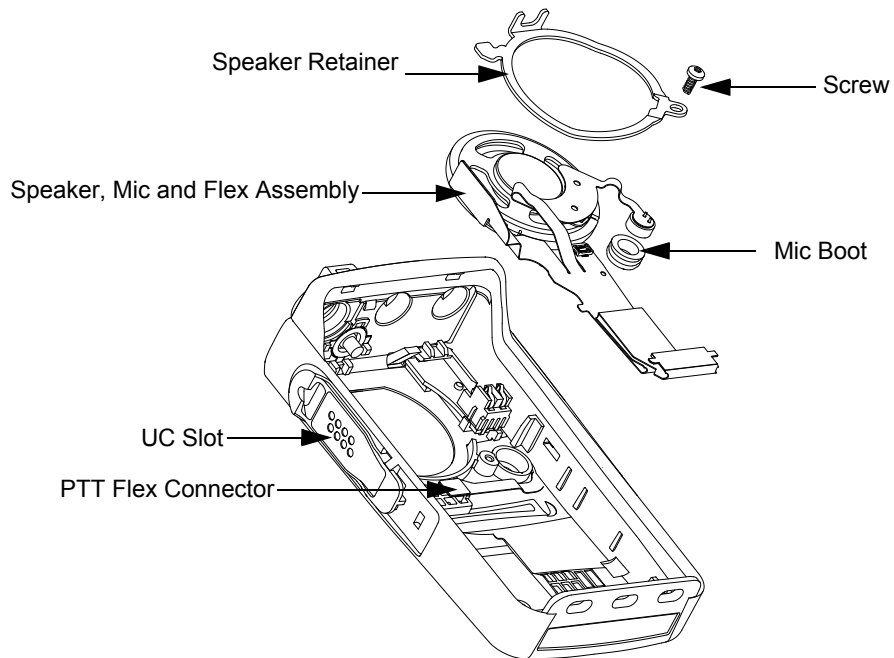


Figure 5-11. Speaker Removal

3. Slide the universal connector flex into UC slot.
4. Hook in the speaker retainer with speaker assembly at the top left corner of the housing.
5. Affix the appropriate screw on the speaker retainer.
6. Place the mic boot in the appropriate slot.
7. Place a new universal connector escutcheon on the universal connector flex circuit.

5.7.2 Chassis Reassembly

O-ring reassembly:

- i. Ensure that the main O-ring is not twisted and untangle it to its actual form if needed before performing reassembly.
- ii. Insert the notches onto the chassis.
- iii. Replace the battery contact seal.

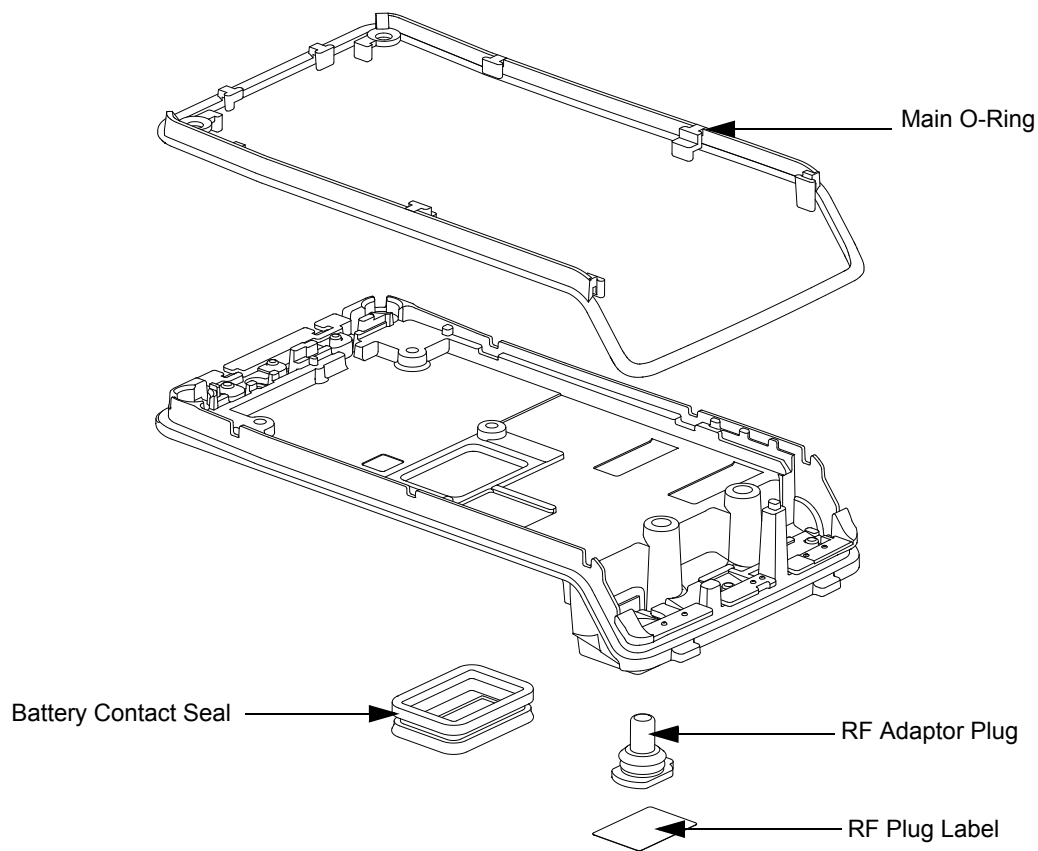


Figure 5-12. O-ring Reassembly.

1. Place the main board onto the chassis.
2. Tighten the main board screws in the sequence shown in Figure 5-13.
3. Place the GOB retainer on the main board and tighten the screws.

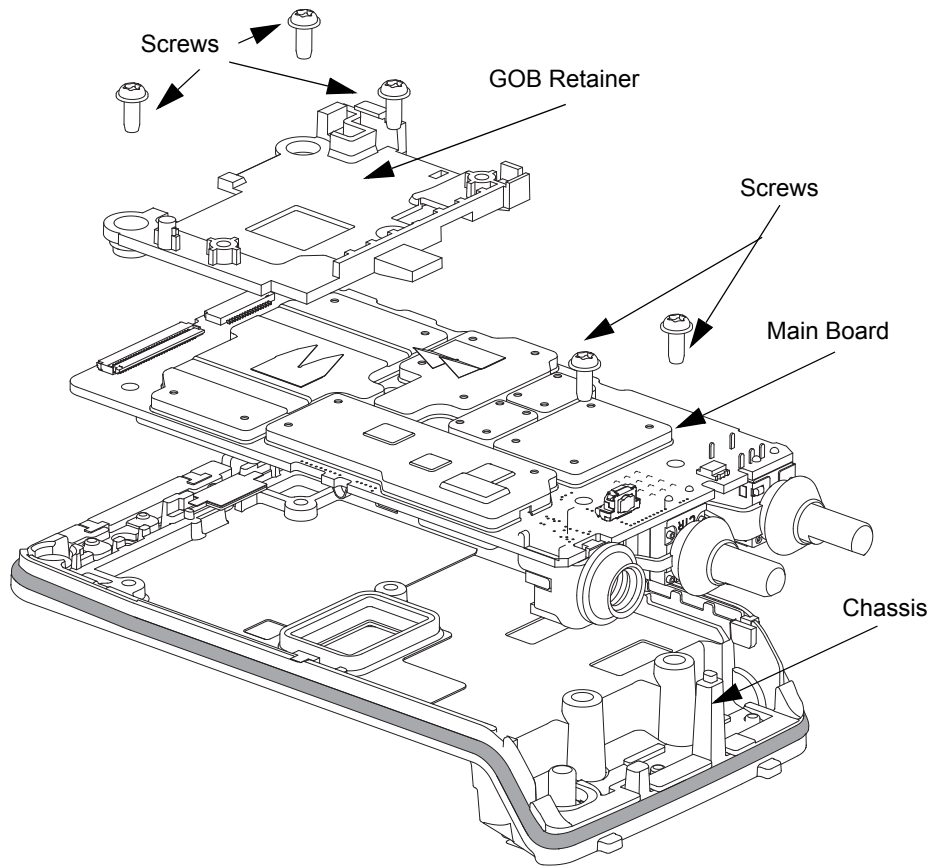


Figure 5-13. Chassis Reassembly

5.7.3 Bluetooth Antenna Kit Disassembly/Reassembly

5.7.3.1 Bluetooth Antenna Kit Disassembly

1. Use a Torx 4 screwdriver to unfasten the bluetooth module.

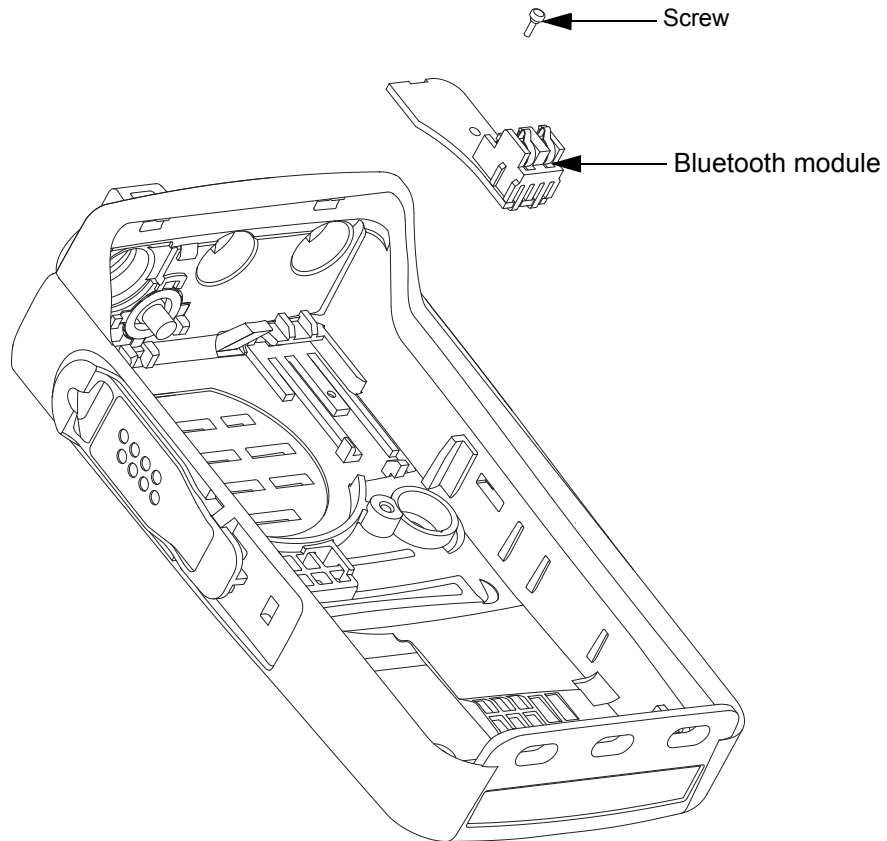


Figure 5-14. Bluetooth Removal

5.7.3.2 Bluetooth Antenna Kit Reassembly

1. Place the Bluetooth module in the housing and fasten with a Torx 4 screwdriver.

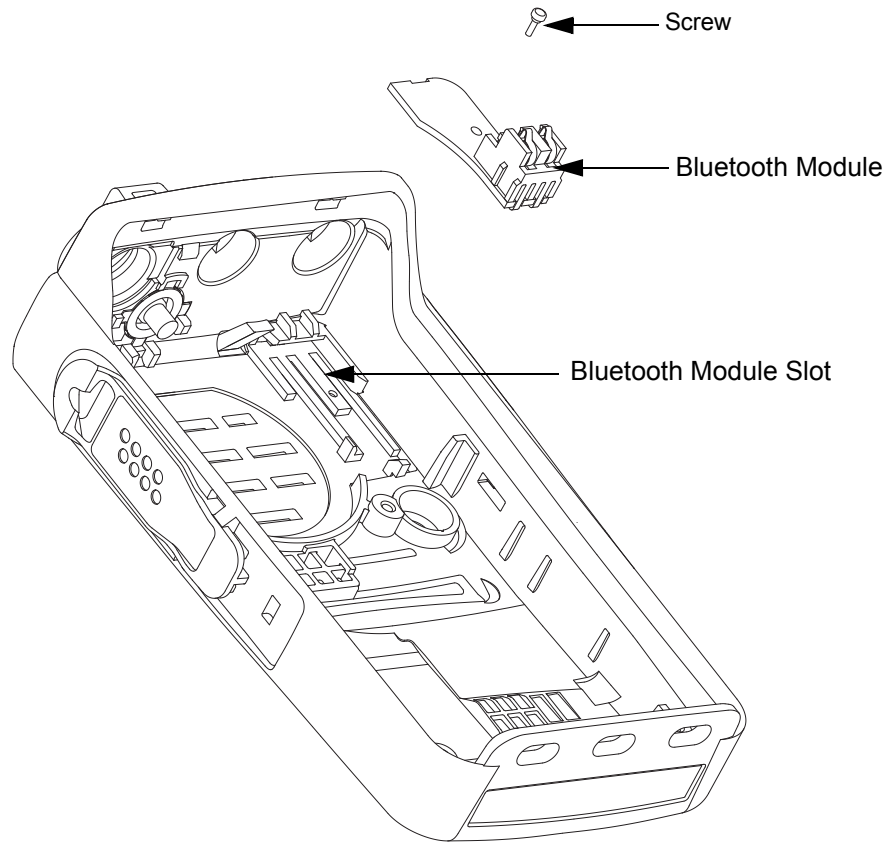


Figure 5-15. Bluetooth Reassembly

5.8 Ensuring Radio Immersibility

This section discusses radio immersibility concerns, tests, and disassembly and reassembly of the DP series radios.

5.8.1 Servicing

The DP series radios shipped from the Motorola factory have passed vacuum testing and should be capable of restoring the watertight integrity of the radio.



Caution

It is strongly recommended that the maintenance of the radio be deferred to qualified service personnel and service shops. This is of paramount importance as irreparable damage to the radio can result from service by unauthorized persons. If disassembly is necessary, unauthorized attempts to repair the radio may void any existing warranties or extended performance agreements with Motorola. It is also recommended that immersibility be checked annually by qualified service personnel/workshop that is authorized by Motorola.

5.8.2 Accidental Immersion

If the radio is accidentally dropped in water, shake the radio to remove the excess water from the speaker grille and microphone port area before operating; otherwise, the sound may be distorted until the water has evaporated, or is dislodged from these areas.

5.8.3 Specialized Test Equipment

This section summarizes the specialized test equipment necessary for testing the integrity of the DP series radios.

To ensure that the radio is truly a watertight unit, special testing, test procedures, and specialized test equipment are required. The special testing involves a vacuum check of the radio and pressure testing (troubleshooting) for water leaks if the vacuum check fails. The specialized test equipment/instrument (Table 2-2 on page 2-2) is authorized by Motorola and needed to perform the vacuum check and pressure testing, if required. Any equipment/tools/instruments not mentioned in the table must not be used to perform these test.

5.8.4 Vacuum Pump Kit NLN9839

The vacuum pump kit includes a vacuum pump with gauge, and a vacuum hose. A connector fitting (part number 5871134M01) and fitting seal (part number 3271133M01) pump connector, which must be ordered separately, connects the vacuum hose to the radio's chassis.

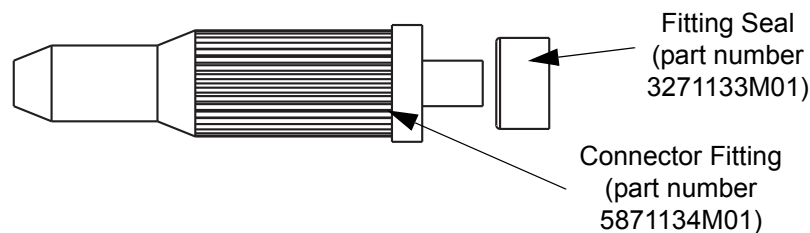


Figure 5-16. Connector Fitting – Fitting Seal Pump Connector

5.8.5 Pressure Pump Kit NTN4265

The pressure pump kit includes a pressure pump with gauge, and a pressure hose. As with the vacuum pump kit above, the connector fitting - fitting seal pair connects the pressure hose to the radio's chassis.

5.8.6 Miscellaneous Hardware

Other items needed for testing the immersibility radio include:

- Large water container
- Deionized (DI) water
- A supply of replacement parts: Main seal O-ring, Battery Contact Seal, Breathing Vent Label and Breathing Vent Membrane.

5.8.7 Vacuum Test

The vacuum test uses a vacuum pump and gauge. The pump creates a vacuum condition inside the radio, and the gauge monitors the radio for a stable vacuum reading; that is, checking for a properly sealed, watertight unit. Before starting the vacuum test:

- Remove the battery.
- Remove the universal connector dustcover to expose the universal connector.
- Remove the breathing vent label and breathing vent membrane.

To conduct the vacuum test:

1. Attach antenna firmly to the radio.
2. Attach the vacuum hose to the vacuum pump. Check the pump and hose for leaks by blocking off the open end of the hose and operating the pump a few times. The actual reading of the gauge at this point is not important; it is important that the gauge pointer remained steady, indicating no vacuum leaks in the pump.
3. Ensure that the fitting seal is attached to the hose-to-chassis pump connector. Screw the pump connector into the tapped hole in the chassis.



Caution

Please do not bend or over tighten pump connector to the chassis.

4. Attach the open end of the hose to the pointed end of the pump connector.
5. Place the radio on a flat surface with the chassis facing upward.
6. Operate the pump until the gauge indicates 6 in. Hg of vacuum on the radio. Observe the gauge for approximately 1 minute.
 - If the needle falls 0.5 in. Hg or less (one scale interval, for example, from 3 in. Hg to 2.5 in. Hg), then the radio has passed the vacuum test and is approved for immersibility. No additional testing will be required.
 - If the needle falls more than 0.5 in. Hg (one scale interval, for example, from 3 in. Hg to less than 2.5 in. Hg), then the radio has failed the vacuum test and the radio might leak if

immersed. Additional troubleshooting of the radio will be required; complete this procedure, then go to Section 5.8.8 "Pressure Test".

7. Remove the vacuum hose and pump connector from the radio.

5.8.8 Pressure Test

Pressure testing the radio is necessary only if the radio has failed the vacuum test. Do not perform the pressure test until the vacuum test has been completed. Pressure testing involves creating a positive pressure condition inside the radio, immersing the radio in water, and observing the radio for a stream of bubbles (leak). Since all areas of the radio are being checked, observe the entire unit carefully for the possibility of multiple leaks before completing this test.

To conduct the pressure test:

1. Screw the pump connector (with fitting seal) into the tapped hole in the chassis.
2. Attach one end of the pressure hose to the pump connector and the other end to the pressure pump.
3. Attach antenna firmly to the radio.
4. Operate the pump until the gauge reads approximately 1 psig.



Caution

Pressure any greater than 1 psig might push air around the main seal

5. Maintain the pressure at 1 psig and immerse the radio into a water-filled container.
6. Watch for any continuous series of bubbles. A stream of bubbles indicates a sign of leakage.

NOTE Some air entrapment may cause the accumulation of bubbles, especially in the grille area, but the bubbles should not be continuous.



Caution

Please do not bend or over tighten pump connector to the chassis.

7. Note all of the seal areas that show signs of leakage. Pinpoint the problem(s) to one (or more) of the following areas:
 - Front Housing
 - Chassis (Main Seal O-ring)
 - Battery Contact Seal

8. Remove the radio from the water container, and dry the radio thoroughly. Be especially careful to dry the area around the main seal to prevent contamination of the internal electronics while the unit is open



Caution

Keep the area around the chassis's vacuum port dry by ensuring that there is no water around it.

9. Remove the pump connector from the chassis.
10. Radio after performing Pressure Test must undergo baking process in a temperature chamber for constant temperature soaking at 60°C for 1 hour. This is to ensure no moisture is trapped inside the radio and prevent contamination of the internal electronics after reassembling the radio.

5.8.9 Troubleshooting Leak Areas

Before repairing any leak, first read all of the steps within the applicable section. This will help to eliminate unnecessary disassembly and reassembly of a radio with multiple leaks. Troubleshoot only the faulty seal areas listed in Section 5.8.8 "Pressure Test" on page 5-21, and when multiple leaks exist, in the order listed.

NOTE Before reassembling the radio, always install a new Main seal O-ring, Battery Contact Seal in the defective area.

5.8.9.1 Front Housing

Do one or both of the following:

1. If a leak occurs at the Lens (Display Models only), Universal Connector, chassis/Housing interface, PTT button area of the housing, replace the housing. Refer to Section 5.6 "Radio Disassembly – Detailed" on page 5-6.
 - a. Remove the housing assembly from the radio.
 - b. Discard the housing assembly and main seal O-ring.
 - c. Install a new main seal O-ring around the chassis assembly.
 - d. Install a new housing assembly to the radio.
 - e. Inspect the main seal for proper seating.
 - f. Observe carefully to ensure that the main seal O-ring is not pinched between the housing and the chassis interface.
2. If the leak occurs at the control top area, remove the knobs in order to determine the leak location:
 - a. Conduct the Pressure Test.
 - b. Identify the leak location.

5.8.9.2 Chassis (Main Seal O-ring)

To replace the main seal O-ring:

1. Refer to Section 5.6.1 "Front Cover from Chassis Disassembly" on page 5-6, remove the chassis assembly from the radio.
2. Refer to Section 5.6.2 "Chassis Disassembly" on page 5-9, remove the Main Board from chassis.
3. Remove the main seal O-ring.
4. Inspect the seal area around the chassis for foreign material that might prevent the main seal O-ring from sealing properly.
5. Assemble a new O-ring; discard the old O-ring.
6. For detailed O-ring assembly sequence, refer to clause 2, step i. to step viii. of Section 5.7.2 "Chassis Reassembly" on page 5-15.
7. Reassemble the chassis assembly followed by installing into Front Cover. (Refer to Section 5.7 "Radio Reassembly – Detailed" on page 5-13).
8. Inspect the main seal O-ring for proper seating. Observe carefully to ensure that the main seal O-ring is not pinched between the housing and the chassis.

NOTE When installing the assembled chassis to the Front Cover, ensure the O-ring at the top two corners are not dislodged from the chassis groove.

5.8.9.3 Battery Contact Seal

To replace the Battery Contact Seal:

1. Refer to Section 5.6 "Radio Disassembly – Detailed" on page 5-6 to remove the Battery Contact Seal.
2. Remove the Battery Contact Seal from the Chassis.
3. Inspect the Battery Contact Seal, Chassis and surrounding areas for foreign material that might prevent the Battery Contact Seal from sealing properly.
4. Install a new Battery Contact Seal; discard the old Seal.
5. Replace a new main seal O-ring; discard the old O-ring.
6. Reassemble the chassis assembly followed by installing into Front Cover. (Refer to Section 5.7 "Radio Reassembly – Detailed" on page 5-13).
7. Inspect the main seal O-ring for proper seating. Observe carefully to ensure that the main seal O-ring is not pinched between the housing and the chassis.

IMPORTANT: Both Label Ventilation (5478220A01) and Gasket (3286058L01) need to be replaced after vacuum test, pressure test or water leakage troubleshooting.

5.8.9.4 Breathing Vent Membrane and Breathing Vent Label

To replace the Breathing Vent Membrane and Breathing Vent Label:

1. Remove the Breathing Vent Label that covers the Breathing Vent Membrane from the chassis.
2. Remove the Breathing Vent Membrane.
3. Ensure that the chassis's surface (at the Breathing Vent Label & Breathing Vent Membrane recessed) is clean, no/minimum scratches and free from any adhesive or other foreign materials.
4. Install a new Breathing Vent Membrane, covering the vent port hole, in the small recessed area in the chassis. Ensure that no oily substance come in contact with the seal.
5. Install a new Breathing Vent Label over the Breathing Vent Membrane in the larger recessed area in the chassis. Press down evenly over the label's surface to ensure good adhesion.

5.8.9.5 Battery Maintenance

1. As part of an Annual Battery Maintenance Program or as required (when the battery contacts are dirty or show signs of wear) it is recommended that the Battery's Radio-side and Charger-side contacts are cleaned with DeoxIT[®]GOLD cleaner/lubricant.
2. DeoxIT[®]GOLD (Supplier CAIG Labs, P/N G100P) cleaner/lubricant pen has been found to be very effective at cleaning and extending the life of the battery's contacts. DeoxIT[®]GOLD cleaner/lubricant is available at numerous electronics suppliers (Radio Shack, McMaster Carr, Fry's, etc.) and directly from manufacturer, CAIG Labs, at <http://www.caig.com>.
3. This pen based package is recommended as it provides better access to the recessed contacts of the battery. The pen's tip may need to be modified (trimmed on the sides) to improve penetration into the battery contact slots. Per the manufacturer's instructions, shake the pen until the fluid begins to flow and wipe the battery's contact surface with the felt tip. After cleaning, inspect the contact surfaces for signs of advanced wear.
4. Advanced contact wear is defined as wear through either the contact platings (gold and nickel) to the base metal (copper). Copper exposure is characterized by a distinctive orange-brown metal appearance surrounded by the silvery nickel underplate and gold top coat.
5. In some cases, a magnified (10x minimum) inspection may be required to verify wear through to the base material. Polishing of the gold or nickel surface is common and is not considered a need for replacement. In instances where advanced wear is evident, the battery should be replaced.
6. After cleaning the contact areas of any foreign material, let the lubricant/cleaner dry for 2 minutes. Replace the battery on the radio and test for intermittency by moving the battery relative to the radio as might occur in regular use.

NOTE Regular maintenance (at least annually) of this area is recommended to ensure contamination free interface and to prolong the life of the battery contacts.

5.8.10 Troubleshooting Charts

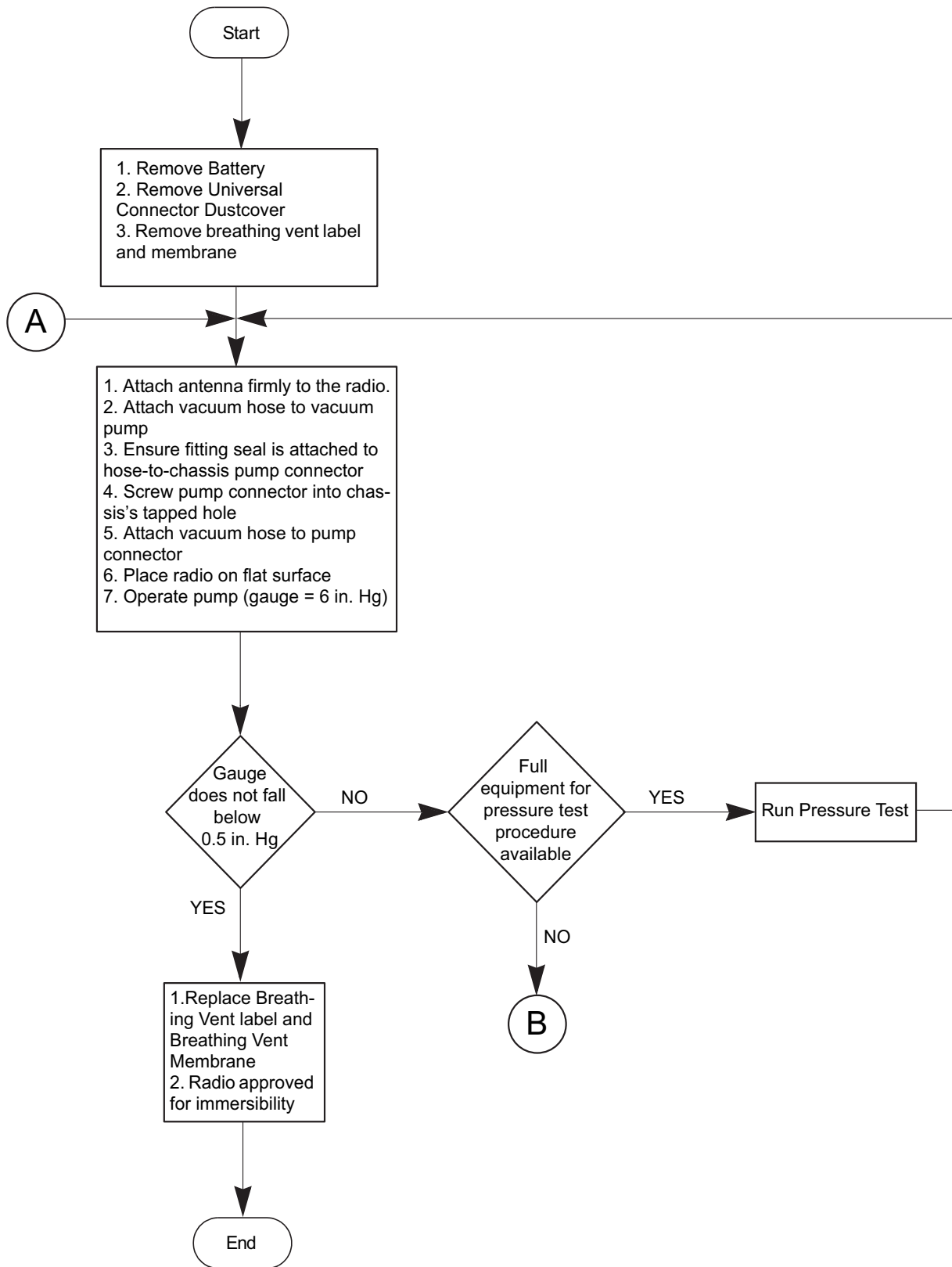


Figure 5-17. Troubleshooting Flow Chart for Vacuum Test (Sheet 1 of 2)

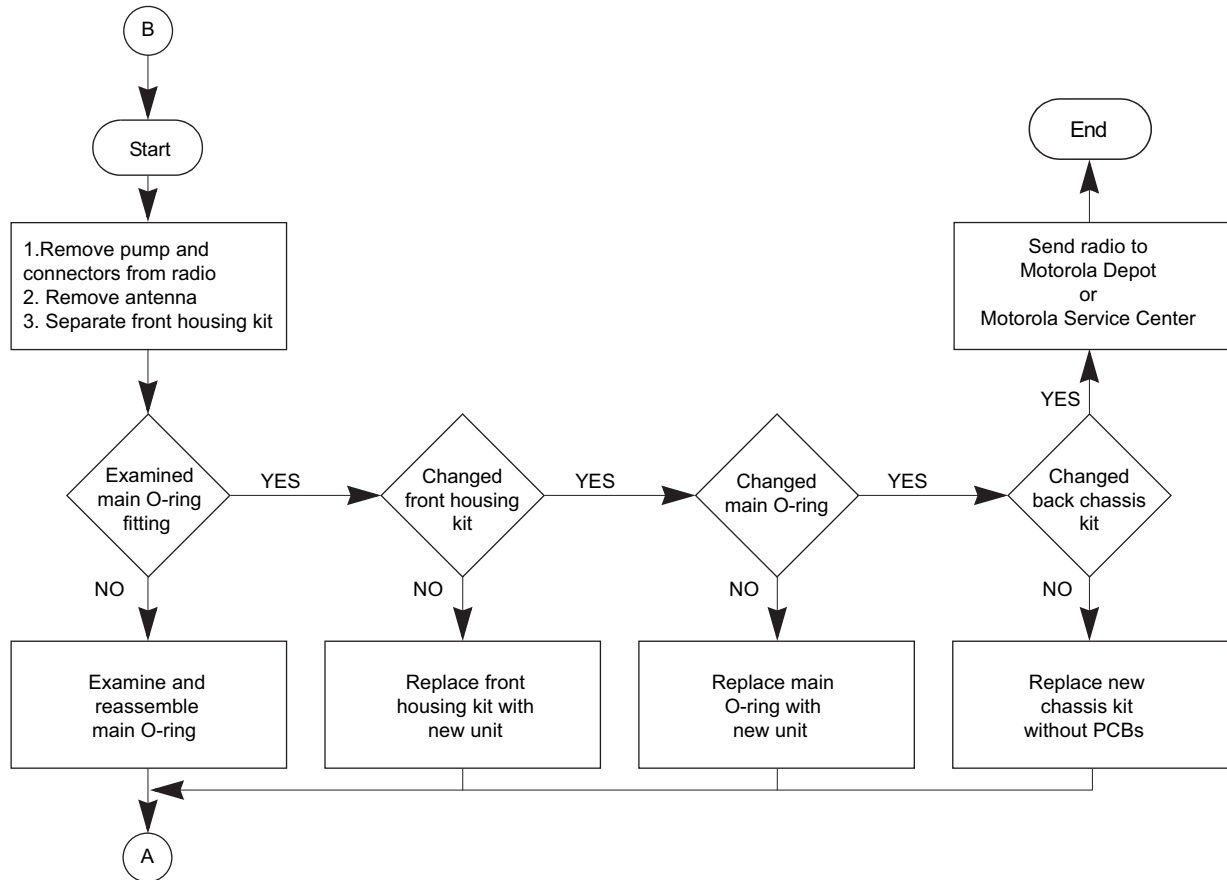


Figure 5-18. Troubleshooting Flow Chart for Vacuum Test (Sheet 2 of 2)

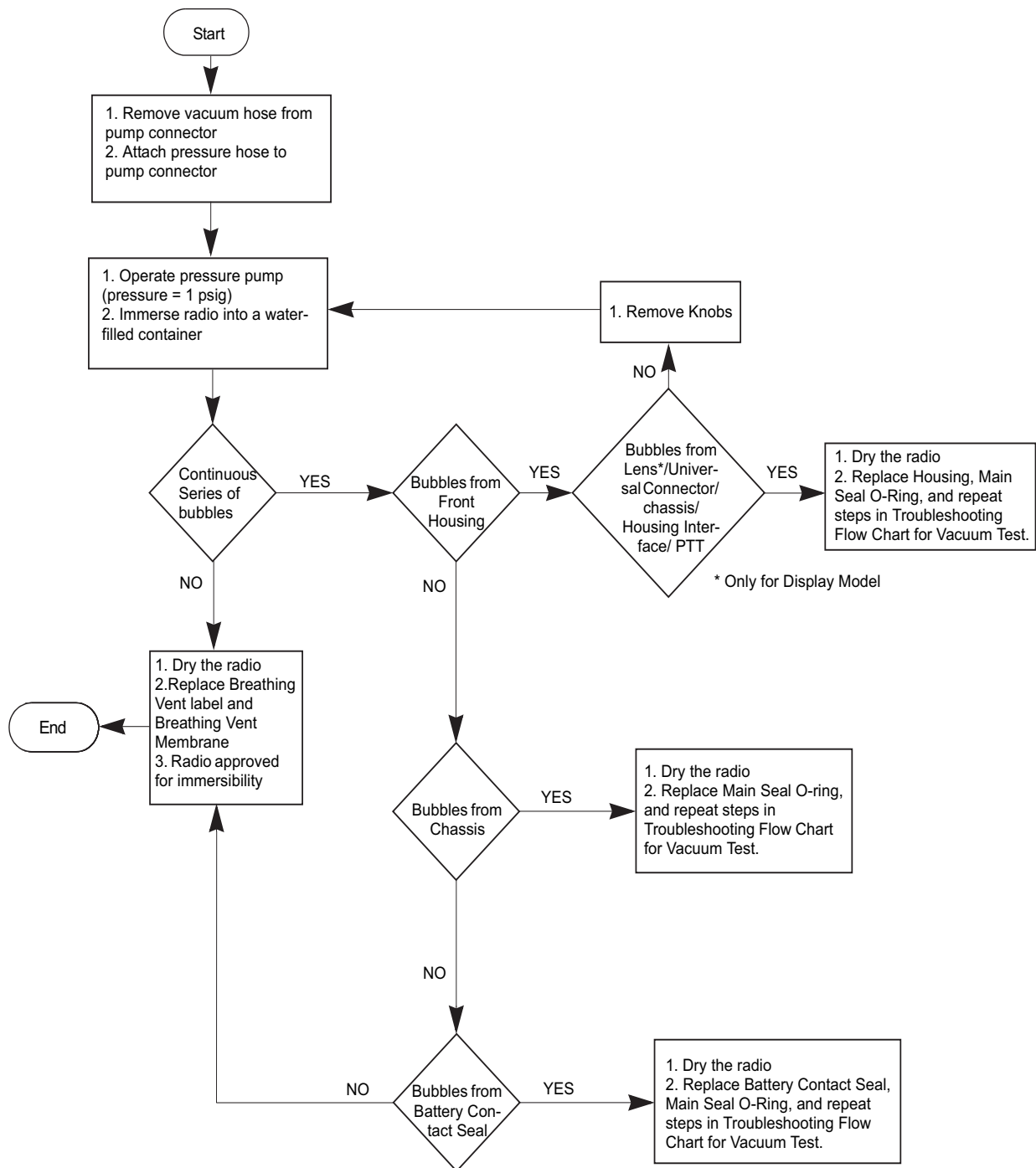


Figure 5-19. Troubleshooting Flow Chart for Pressure Test & Leakage Areas

5.9 Radio Exploded Mechanical Views and Parts Lists

5.9.1 DP3441 Model Exploded View and Parts List

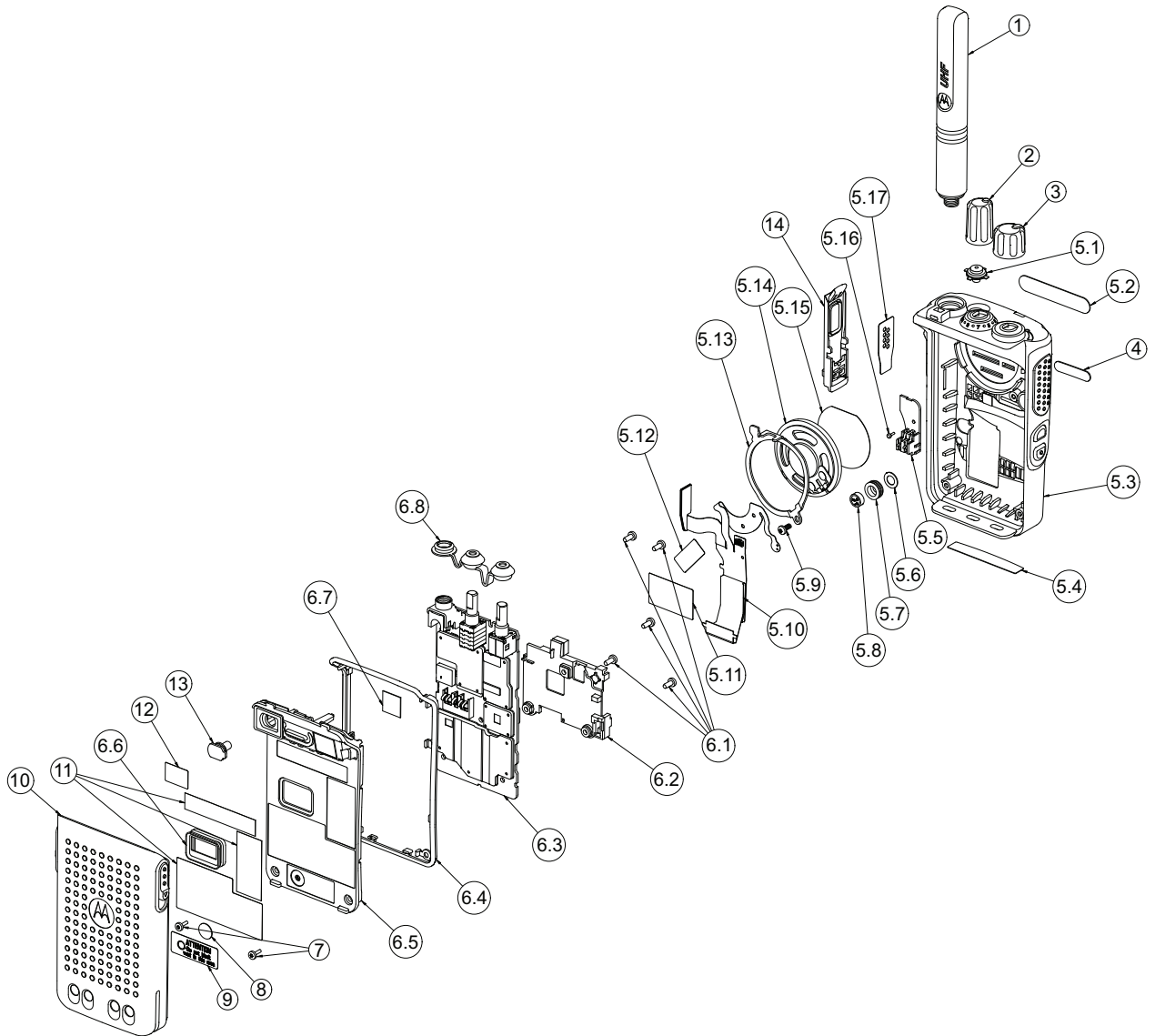


Figure 5-20. DP3441 Exploded View

Table 5-3. DP3441 Exploded View Parts List

| Item No. | | Description | Part Number |
|----------|------|-----------------------------|--|
| 1 | | Antenna | See Chapter 6: Accessories |
| 2 | | Knob, Frequency | 36012004001 |
| 3 | | Knob, Volume | 36012005001 |
| 4 | | Product Number Label | See Table 5-4: Product Number Label |
| 5 | | Front Cover Kit | See Table 5-4: Front Cover Kit |
| | 5.1 | Button, Emergency | 38012008001 |
| | 5.2 | Name plate | 33012026001 |
| | 5.3 | Front housing Assembly | 0104057J43 |
| | 5.4 | Label, Front housing | 54012348001 |
| | 5.5 | BT/GPS Antenna Module | 85012045001 |
| | 5.6 | Mic Membrane with Stiffener | Not supported. Please order Item No.5. |
| | 5.7 | Boot, Microphone | Not supported. Please order Item No.5. |
| | 5.8 | Microphone | 50012012001 |
| | 5.9 | Screw, speaker retainer | 0386434Z02 |
| | 5.10 | Main Flex Assembly | 0104057J44 |
| | 5.11 | Kapton Tape, Flex | Not supported. Please order Item No.5. |
| | 5.12 | Kapton Tape, Speaker | Not supported. Please order Item No.5. |
| | 5.13 | Speaker Retainer Assembly | 0104045J57 |
| | 5.14 | Speaker | 50012013001 |
| | 5.15 | Mesh, Speaker | Not supported. Please order Item No.5. |
| | 5.16 | Screw, bluetooth board | 0371160D01 |
| | 5.17 | UC Escutcheon | 33012020001 |
| 6 | | Back Cover Kit | See Table 5-4: Back Cover Kit |
| | 6.1 | Screw, main board | 03012073001 |
| | 6.2 | GOB Retainer Assembly | 0104059J98 |
| | 6.3 | Main Board | Not supported. Please order Item No.6. |
| | 6.4 | O-ring | 32012253001 |
| | 6.5 | Chassis Assembly Kit | 0104057J75 |
| | 6.6 | Battery contact seal | 32012254001 |

Table 5-3. DP3441 Exploded View Parts List

| Item No. | | Description | Part Number |
|----------|-----|-----------------------|--|
| | 6.7 | Pad, Thermal | 75012234001 |
| | 6.8 | Seal, Top Control | Not supported. Please order Item No.6. |
| 7 | | Screw, housing | 0316281H01 |
| 8 | | Gasket | 3286058L01 |
| 9 | | Label, Ventilation | 5478220A01 |
| 10 | | Battery | PMNN4440_ |
| 11 | | Labels | Not Field Replaceable |
| 12 | | RF Adaptor Plug label | 33012058001 |
| 13 | | RF Adaptor Plug | 38012048001 |
| 14 | | Dust Cover Assembly | 0104058J40 |

Table 5-4. Additional Part List Information

| Item | Description | Part Number |
|-------------------------|--------------------------|-------------|
| Product Numbering Label | DP3441 | 33012015025 |
| Front Cover Kit | Front Cover Kit with BT | PMLN6484_ |
| Back Cover Kit | Back Kit UHF with BT/GPS | PMLE4936_S |
| | Back Kit VHF with BT/GPS | PMLD4607_S |

5.9.2 Torque Chart

Table 5-5 lists the various screws by part number and description, followed by the torque values in different units of measure. Torque all screws to the recommended value when assembling the radio.

Table 5-5. Torque Specifications for Screws

| Part Number | Description | Driver/ Socket | Torque | |
|-------------|--------------------------|-------------------|-----------|-------------|
| | | | lbs-in | N-m |
| 03012073001 | Screw, Main Board | T8 Torx | 3.1 – 3.3 | 0.35 – 0.37 |
| 0386434Z02 | Screw, Speaker Retainer | T6 Torx | 2.3 – 2.5 | 0.26 – 0.28 |
| 0371160D01 | Screw, Bluetooth Antenna | T4 Torx | 0.4 – 0.6 | 0.05 – 0.07 |
| 0316281H01 | Screw, Housing Chassis | T6 Torx | 2.1 – 2.3 | 0.24 – 0.26 |

Notes

Appendix A EMEA Regional Warranty, Service and Technical Support

A.1 Warranty and Service Support

Motorola offers long term support for its products. This support includes full exchange and/or repair of the product during the warranty period, and service/ repair or spare parts support out of warranty. Any "return for exchange" or "return for repair" by an authorized Motorola Dealer must be accompanied by a Warranty Claim Form. Warranty Claim Forms are obtained by contacting an Authorized Motorola Dealer.

A.1.1 Warranty Period and Return Instructions

The terms and conditions of warranty are defined fully in the Motorola Dealer or Distributor or Reseller contract. These conditions may change from time to time and the following notes are for guidance purposes only.

In instances where the product is covered under a "return for replacement" or "return for repair" warranty, a check of the product should be performed prior to shipping the unit back to Motorola. This is to ensure that the product has been correctly programmed or has not been subjected to damage outside the terms of the warranty.

Prior to shipping any radio back to the appropriate Motorola warranty depot, please contact Customer Resources (Please see page A-3). All returns must be accompanied by a Warranty Claim Form, available from your Customer Services representative. Products should be shipped back in the original packaging, or correctly packaged to ensure no damage occurs in transit.

A.1.2 After Warranty Period

After the Warranty period, Motorola continues to support its products in two ways.

1. Motorola's Managed Technical Services (MTS) offers a repair service to both end users and dealers at competitive prices.
2. MTS supplies individual parts and modules that can be purchased by dealers who are technically capable of performing fault analysis and repair.

A.2 European Radio Support Centre (ERSC)

The ERSC Customer Information Desk is available through the following service numbers:

| | | | |
|----------|--------------------|--------------|----------------|
| Austria: | 08 00 29 75 41 | Italy: | 80 08 77 387 |
| Belgium: | 08 00 72 471 | Luxemburg: | 08 00 23 27 |
| Denmark: | 80 88 58 80 | Netherlands: | 08 00 22 45 13 |
| Finland: | 08 00 11 49 910 | Norway: | 80 01 11 15 |
| France: | 08 00 90 30 90 | Portugal: | 08 00 84 95 70 |
| Germany: | 08 00 18 75 240 | Spain: | 90 09 84 902 |
| Greece: | 00 80 04 91 29 020 | Sweden: | 02 07 94 307 |
| UK : | 08 00 96 90 95 | Switzerland: | 08 00 55 30 82 |
| Ireland: | 18 00 55 50 21 | Iceland: | 80 08 147 |

Or dial the European Repair and Service Centre:

Telephone: +49 30 6686 1555

Fax ERSC: +49 30 6686 1579

Email ERSC: ERSC@motorolasolutions.com

Please use these numbers for repair enquiries only.

A.3 Piece Parts

Some replacement parts, spare parts, and/or product information can be ordered directly. While parts may be assigned with a Motorola part number, this does not guarantee that they are available from Motorola Radio Products and Solutions Organization (RPSO). Some parts may have become obsolete and no longer available in the market due to cancellations by the supplier. If no Motorola part number is assigned, the part is normally not available from Motorola, or is not a userserviceable part. Part numbers appended with an asterisk are serviceable by Motorola Depot only.

Orders for replacement parts, kits and assemblies should be placed directly on Motorola's local distribution/dealer organisation or via Motorola Online at: <http://emeaonline.motorolasolutions.com>

* The Radio Products and Solutions Organization (RPSO) was formerly known as the Radio Products Services Division (RPSD) and/or the Accessories and Aftermarket Division (AAD).

A.4 Technical Support

Motorola Product Services is available to assist the dealer/distributors in resolving any malfunctions which may be encountered.

Russia and Armenia – Andrey Nagornykh
Telephone: +7 495 787 8910
Fax: +7 495 785 0185
Email: mwcb47@motorolasolutions.com

Middle East and Africa – Wayne Holmes
Telephone: +49 (0) 6126 957 6237
Fax: +49 (0) 6126 957 6826
Email:
wayne.holmes@motorolasolutions.com

France – Armand Roy
Telephone: +33 1 6935 7868
Fax: +33 1 6935 7808
Email: armand.roy@motorolasolutions.com

France – Laurent Irrmann
Telephone: +33 1 6935 7866
Fax: +33 1 6935 7808
Email:
laurent.irrmann@motorolasolutions.com

Central and East Europe – Siggy Punzenberger
Telephone: +49 (0) 6128 70 2342
Fax: +49 (0) 6128 95 1096
Email: TFG003@motorolasolutions.com

Germany – Customer Connect Team
Telephone: +49 (0) 30 6686 1539
Fax: +49 (0) 30 6686 1916
Email: ESSC@motorolasolutions.com

Italy – Ugo Gentile
Telephone: +39 02 5220 7825
Fax: +39 02 5220 7810
Email: Ugo.Gentile@motorolasolutions.com

A.5 Further Assistance From Motorola

You can also contact the Customer Help Desk through the following web address.
<http://www.motorolasolutions.com>

Notes

Appendix B Limited Level 3 Servicing

B.1 Maintenance

For details on the following, please refer to [section 5.2 on page 5-1](#) to [section 5.4 on page 5-4](#).

- Preventive maintenance (inspection and cleaning).
- Safe handling of CMOS and LDMOS devices.
- Repair procedures and techniques.

B.2 Chip Components

Use a Hot-Air Repair Station for chip component replacement. Adjust the temperature control to 370°C (700°F), and adjust the airflow to a minimum setting. Airflow can vary due to component density.

- **To remove a chip component:**

1. Use a hot-air hand piece and position the nozzle of the hand piece approximately 0.3 cm (1/8") above the component to be removed.
2. Begin applying the hot air. Once the solder reflows, remove the component using a pair of tweezers.
3. Using a solder wick and a soldering iron or a power desoldering station, remove the excess solder from the pads.

- **To replace a chip component using a soldering iron:**

1. Select the appropriate micro-tipped soldering iron and apply fresh solder to one of the solder pads.
2. Using a pair of tweezers, position the new chip component in place while heating the fresh solder.
3. Once solder wicks onto the new component, remove the heat from the solder.
4. Heat the remaining pad with the soldering iron and apply solder until it wicks to the component. If necessary, touch up the first side. All solder joints should be smooth and shiny.

- **To replace a chip component using hot air:**

1. Use the hot-air hand piece and reflow the solder on the solder pads to smooth it.
2. Apply a drop of solder paste flux to each pad.
3. Using a pair of tweezers, position the new component in place.
4. Position the hot-air hand piece approximately 0.3 cm (1/8") above the component and begin applying heat.
5. Once the solder wicks to the component, remove the heat and inspect the repair. All joints should be smooth and shiny.

B.3 Component and Parts list

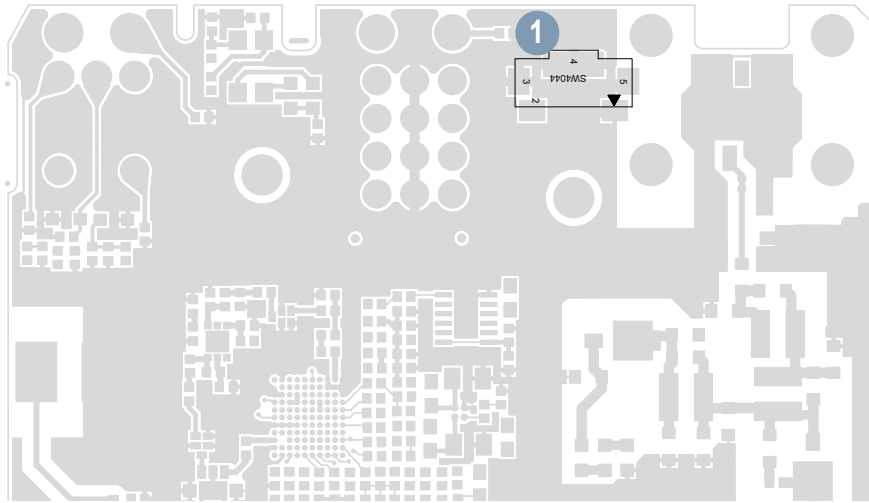


Figure B-1. PCB Top View

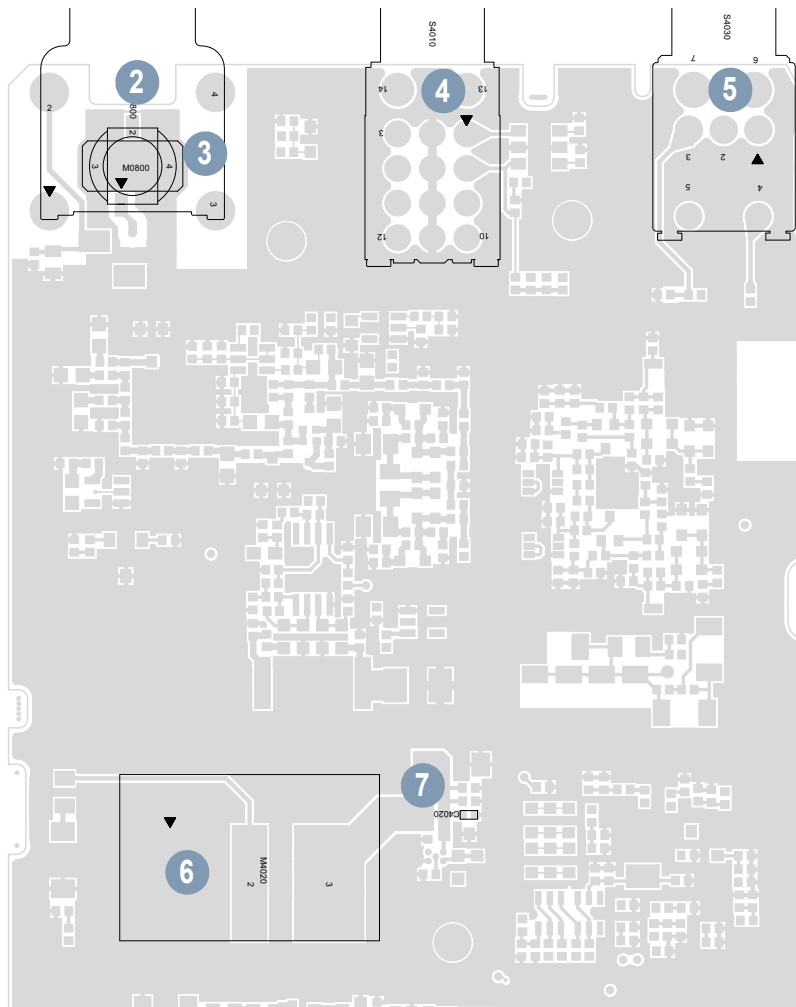


Figure B-2. PCB Bottom View

Table B-1 Component Parts List

| No. | Circuit Ref | Motorola Part Num. | Description |
|------------|--------------------|---------------------------|-------------------------------|
| 1 | SW4044 | 4086470Z01 | Tact Switch |
| 2 | M0800 | 0987378K01 | RF Connector, coaxial, female |
| 3 | E0800 | 02012010001 | Antenna Nut |
| 4 | S4010 | 40012029001 | Frequency Switch |
| 5 | S4030 | 1875103C04 | Volume Rotary On/Off Switch |
| 6 | M4020 | 9012098001 | Battery Contact Connector |
| 7 | F4020 | 6515076H01 | Fuse Fast Blow 3A 24V |

Notes

Glossary

This glossary contains an alphabetical listing of terms and their definitions that are applicable to portable and mobile subscriber radio products. All terms do not necessarily apply to all radios, and some terms are merely generic in nature.

| Term | Definition |
|------------------|---|
| Analog | Refers to a continuously variable signal or a circuit or device designed to handle such signals. |
| Band | Frequencies allowed for a specific purpose. |
| CPS | Customer Programming Software: Software with a graphical user interface containing the feature set of a radio. |
| Default | A pre-defined set of parameters. |
| DP | Refers to Digital Professional Radio model names in the MOTOTRBO Professional Digital Two-Way Radio System. |
| Digital | Refers to data that is stored or transmitted as a sequence of discrete symbols from a finite set; most commonly this means binary data represented using electronic or electromagnetic signals. |
| DPL | Digital Private-Line: A type of digital communications that utilizes privacy call, as well as memory channel and busy channel lock out to enhance communication efficiency. |
| FCC | Federal Communications Commission. |
| Frequency | Number of times a complete electromagnetic-wave cycle occurs in a fixed unit of time (usually one second). |
| GPIO | General-Purpose Input/Output: Pins whose function is programmable. |
| GPS | Global Positioning System. |
| IC | Integrated Circuit: An assembly of interconnected components on a small semiconductor chip, usually made of silicon. One chip can contain millions of microscopic components and perform many functions. |
| IF | Intermediate Frequency. |
| kHz | kilohertz: One thousand cycles per second. Used especially as a radio-frequency unit. |
| LCD | Liquid-Crystal Display: An LCD uses two sheets of polarizing material with a liquid-crystal solution between them. An electric current passed through the liquid causes the crystals to align so that light cannot pass through them. |
| LED | Light Emitting Diode: An electronic device that lights up when electricity is passed through it. |

| Term | Definition |
|--------------------------|--|
| MDC | Motorola Digital Communications. |
| MHz | Megahertz: One million cycles per second. Used especially as a radio-frequency unit. |
| Paging | One-way communication that alerts the receiver to retrieve a message. |
| PC Board | Printed Circuit Board. Also referred to as a PCB. |
| PL | Private-Line Tone Squelch: A continuous sub-audible tone that is transmitted along with the carrier. |
| Programming Cable | A cable that allows the CPS to communicate directly with the radio using USB. |
| Receiver | Electronic device that amplifies RF signals. A receiver separates the audio signal from the RF carrier, amplifies it, and converts it back to the original sound waves. |
| Repeater | Remote transmit/receive facility that re-transmits received signals in order to improve communications range and coverage (conventional operation). |
| RF | Radio Frequency: The portion of the electromagnetic spectrum between audio sound and infrared light (approximately 10 kHz to 10 GHz). |
| RX | Receive. |
| Signal | An electrically transmitted electromagnetic wave. |
| Spectrum | Frequency range within which radiation has specific characteristics. |
| Squelch | Muting of audio circuits when received signal levels fall below a pre-determined value. With carrier squelch, all channel activity that exceeds the radio's preset squelch level can be heard. |
| TOT | Time-out Timer: A timer that limits the length of a transmission. |
| TPL | Tone Private Line. |
| Transceiver | Transmitter-receiver. A device that both transmits and receives analog or digital signals. Also abbreviated as XCVR. |
| Transmitter | Electronic equipment that generates and amplifies an RF carrier signal, modulates the signal, and then radiates it into space. |
| TX | Transmit. |
| UHF | Ultra-High Frequency. |
| USB | Universal Serial Bus: An external bus standard that supports data transfer rates of 12 Mbps. |
| VIP | Vehicle Interface Port. |



Motorola Solutions Malaysia Sdn Bhd.(Co. No. 455657-H)
Plot 2 Bayan Lepas Technoplex Industrial Park
Mukim 12 S.W.D
11900 Penang, Malaysia

MOTOROLA, MOTO, MOTOROLA SOLUTIONS and
the Stylized M logo are trademarks or registered trademarks
of Motorola Trademark Holdings, LLC and are used under license.
All other trademarks are the property of their respective owners.
© 2013 Motorola Solutions, Inc. All rights reserved.
May 2013.

www.motorolasolutions.com/mototrbo



68012009027-A